

---

## Summary

<b>Production Name</b>	SMC1A Rabbit Polyclonal Antibody
<b>Description</b>	Primary antibody
<b>Host</b>	Rabbit
<b>Application</b>	WB,IHC-P,ICC/IF
<b>Reactivity</b>	Human,Mouse,Rat

## Performance

<b>Conjugation</b>	Unconjugated
<b>Modification</b>	Unmodified
<b>Isotype</b>	IgG
<b>Clonality</b>	Polyclonal Antibody
<b>Form</b>	Liquid
<b>Storage</b>	Store at 4°C short term. Aliquot and store at -20°C long term. Avoid freeze/thaw cycles.
<b>Buffer</b>	Rabbit IgG in phosphate buffered saline , pH 7.4, 150mM NaCl, 0.02% sodium azide and 50% glycerol.
<b>Purification</b>	Affinity Chromatography

## Immunogen

<b>Gene Name</b>	SMC1A Chromosome segregation protein SmcB; DXS423E; KIAA0178; MGC138332; Sb1.8; Segregation of mitotic chromosomes 1; SMC protein 1A; SMC-1-alpha; SMC-1A; SMC1 (structural maintenance of chromosomes 1 yeast) like 1; SMC1; SMC1 structural maintenance of chromosomes 1 like 1; SMC1A; SMC1A_HUMAN; SMC1alpha; SMC1L1; SMCB; Structural maintenance of chromosomes 1A; Structural maintenance of chromosomes protein 1A.
<b>Alternative Names</b>	
<b>Gene ID</b>	8243
<b>SwissProt ID</b>	Q14683

## Application

**Product Name: SMC1A Rabbit Polyclonal Antibody**  
**Catalog #: APRab00107**



**Dilution Ratio**

WB: 1/500-1/1000 IHC: 1/50-1/100 IF: 1/50-1/200

**Molecular Weight**

Calculated MW: 143 kDa; Observed MW: 143 kDa

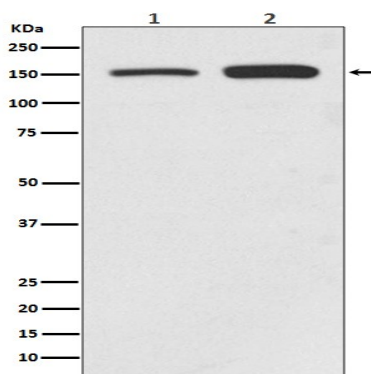
## Background

Structural maintenance of chromosomes 1 (SMC1) protein is a chromosomal protein member of the cohesin complex that enables sister chromatid cohesion and plays a role in DNA repair. ATM/NBS1-dependent phosphorylation of SMC1 occurs at Ser957 and Ser966 in response to ionizing radiation (IR) as part of the intra-S-phase DNA damage checkpoint. SMC1 phosphorylation is ATM-independent in cells subjected to other forms of DNA damage, including UV light and hydroxyurea treatment.

## Research Area

Cell Biology

## Image Data



Western blot analysis of SMC1 in (1) HeLa lysates; (2) Jurkat lysates using SMC1A antibody.

## Note

For research use only.