

Product Name: Glycogen Synthase 1 Rabbit Polyclonal Antibody
Catalog #: APRab00103



Summary

| | |
|------------------------|--|
| Production Name | Glycogen Synthase 1 Rabbit Polyclonal Antibody |
| Description | Primary antibody |
| Host | Rabbit |
| Application | WB,IHC-P,ICC/IF,FC,IP |
| Reactivity | Human,Mouse,Rat |

Performance

| | |
|---------------------|--|
| Conjugation | Unconjugated |
| Modification | Unmodified |
| Isotype | IgG |
| Clonality | Polyclonal Antibody |
| Form | Liquid |
| Storage | Store at 4°C short term. Aliquot and store at -20°C long term. Avoid freeze/thaw cycles. |
| Buffer | Rabbit IgG in phosphate buffered saline , pH 7.4, 150mM NaCl, 0.02% sodium azide and 50% glycerol. |
| Purification | Affinity Chromatography |

Immunogen

| | |
|--------------------------|---|
| Gene Name | GYS1 |
| Alternative Names | GYS1; GYS; Glycogen [starch] synthase; muscle |
| Gene ID | 2997 |
| SwissProt ID | P13807 |

Application

| | |
|-------------------------|---|
| Dilution Ratio | WB: 1/500-1/1000 IHC: 1/50-1/100 IF: 1/50-1/200 IP: 1/20 FC: 1/50-1/100 |
| Molecular Weight | Calculated MW: 84 kDa; Observed MW: 84 kDa |

Product Name: Glycogen Synthase 1 Rabbit Polyclonal Antibody
Catalog #: APRab00103



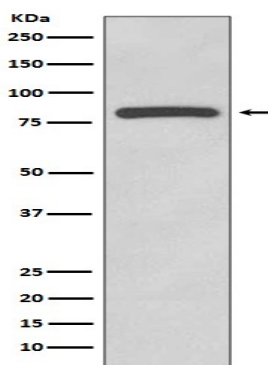
Background

Transfers the glycosyl residue from UDP-Glc to the non-reducing end of alpha-1,4-glucan. Allosteric activation by glucose-6-phosphate. Phosphorylation reduces the activity towards UDP-glucose. When in the non-phosphorylated state, glycogen synthase does not require glucose-6-phosphate as an allosteric activator; when phosphorylated it does.

Research Area

Signal Transduction

Image Data



Western blot analysis of Glycogen synthase in HeLa lysates using Glycogen Synthase 1 antibody.

Note

For research use only.