

Summary

Production Name	Cortactin Rabbit Polyclonal Antibody
Description	Primary antibody
Host	Rabbit
Application	WB,IHC-P,ICC/IF,FC,IP
Reactivity	Human,Mouse,Rat

Performance

Conjugation	Unconjugated
Modification	Unmodified
Isotype	IgG
Clonality	Polyclonal Antibody
Form	Liquid
Storage	Store at 4°C short term. Aliquot and store at -20°C long term. Avoid freeze/thaw cycles.
Buffer	Rabbit IgG in phosphate buffered saline , pH 7.4, 150mM NaCl, 0.02% sodium azide and 50% glycerol.
Purification	Affinity Chromatography

Immunogen

Gene Name	CTTN
Alternative Names	CTTN; EMS1; Src substrate cortactin; Amplaxin; Oncogene EMS1
Gene ID	2017
SwissProt ID	Q14247

Application

Dilution Ratio	WB: 1/500-1/1000 IHC: 1/50-1/100 IF: 1/50-1/200 IP: 1/20 FC: 1/50-1/100
Molecular Weight	Calculated MW: 62 kDa; Observed MW: 80 kDa

Product Name: Cortactin Rabbit Polyclonal Antibody
Catalog #: APRab00077



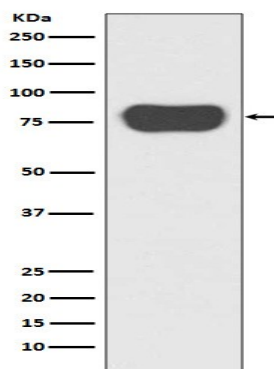
Background

Cortactin is a cytoskeletal protein that is involved in coordinating actin reorganization during cell movement. It localizes at the leading edge of lamellipodia during cell migration. Its amino-terminal acidic domain associates with the Arp2/3 and WASP complex at F-actin branches.

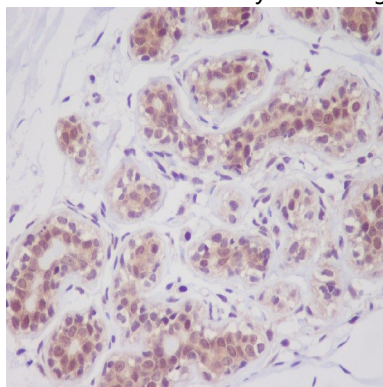
Research Area

Signal Transduction

Image Data



Western blot analysis of Cortactin in HeLa lysates using Cortactin antibody.



Immunohistochemistry analysis of paraffin-embedded Human breast cancer using Cortactin antibody. High-pressure and temperature Sodium Citrate pH 6.0 was used for antigen retrieval.

Note

For research use only.