

Summary

Production Name	DGCR8 Rabbit Polyclonal Antibody
Description	Primary antibody
Host	Rabbit
Application	WB,ICC/IF,IP
Reactivity	Human,Mouse,Rat

Performance

Conjugation	Unconjugated
Modification	Unmodified
Isotype	IgG
Clonality	Polyclonal Antibody
Form	Liquid
Storage	Store at 4°C short term. Aliquot and store at -20°C long term. Avoid freeze/thaw cycles.
Buffer	Rabbit IgG in phosphate buffered saline , pH 7.4, 150mM NaCl, 0.02% sodium azide and 50% glycerol.
Purification	Affinity Chromatography

Immunogen

Gene Name	DGCR8
Alternative Names	DGCR8; DGCRK6; Gy1; C22orf12; D16Wis2; pasha
Gene ID	54487
SwissProt ID	Q8WYQ5

Application

Dilution Ratio	WB: 1/500-1/1000 IF: 1/50-1/200 IP: 1/20
Molecular Weight	Calculated MW: 86 kDa; Observed MW: 100 kDa

Background

Product Name: DGCR8 Rabbit Polyclonal Antibody
Catalog #: APRab00056

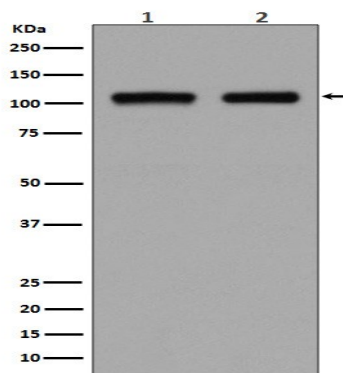


Component of the microprocessor complex that is required to process primary miRNA transcripts (pri-miRNAs) to release precursor miRNA (pre-miRNA) in the nucleus. Within the microprocessor complex, DGCR8 function as a molecular anchor necessary for the recognition of pri-miRNA at dsRNA-ssRNA junction and directs DROSHA to cleave 11 bp away from the junction to release hairpin-shaped pre-miRNAs that are subsequently cut by the cytoplasmic DICER to generate mature miRNAs.

Research Area

Epigenetics and Nuclear Signaling

Image Data



Western blot analysis of DGCR8 in (1) HEK293 lysates; (2) HeLa lysates using DGCR8 antibody.

Note

For research use only.