

## Summary

<b>Production Name</b>	NUP98 Rabbit Polyclonal Antibody
<b>Description</b>	Primary antibody
<b>Host</b>	Rabbit
<b>Application</b>	WB,IHC-P,ICC/IF
<b>Reactivity</b>	Human

## Performance

<b>Conjugation</b>	Unconjugated
<b>Modification</b>	Unmodified
<b>Isotype</b>	IgG
<b>Clonality</b>	Polyclonal Antibody
<b>Form</b>	Liquid
<b>Storage</b>	Store at 4°C short term. Aliquot and store at -20°C long term. Avoid freeze/thaw cycles.
<b>Buffer</b>	Rabbit IgG in phosphate buffered saline , pH 7.4, 150mM NaCl, 0.02% sodium azide and 50% glycerol.
<b>Purification</b>	Affinity Chromatography

## Immunogen

<b>Gene Name</b>	NUP98 96 kDa nucleoporin; 98 kDa nucleoporin; ADAR2; ADIR2; GLFG-repeat containing nucleoporin; Nuclear pore complex protein Nup96; Nuclear pore complex protein Nup98 Nup96; Nucleoporin 98kD; nucleoporin 98kDa; Nucleoporin Nup96; Nucleoporin Nup98; NUP196; NUP96; Nup98; Nup98-Nup96; NUP98_HUMAN.
<b>Alternative Names</b>	
<b>Gene ID</b>	4928
<b>SwissProt ID</b>	P52948

## Application

<b>Dilution Ratio</b>	WB: 1/500-1/1000 IHC: 1/50-1/100 IF: 1/50-1/200
<b>Molecular Weight</b>	Calculated MW: 198 kDa; Observed MW: 188 kDa

**Product Name: NUP98 Rabbit Polyclonal Antibody**  
**Catalog #: APRab00045**



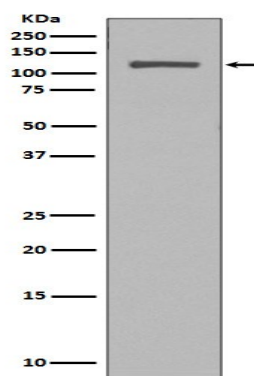
## Background

Plays a role in the nuclear pore complex (NPC) assembly and/or maintenance. Nup98 and Nup96 are involved in the bidirectional transport across the NPC. May anchor NUP153 and TPR to the NPC.

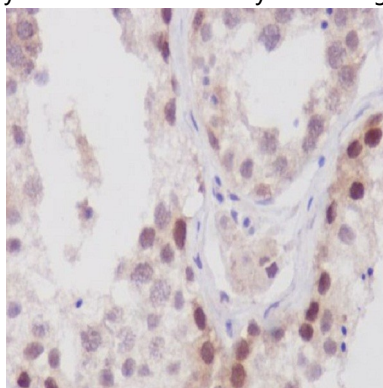
## Research Area

Signal Transduction

## Image Data



Western blot analysis of NUP98 in HeLa lysates using NUP98 antibody.



Immunohistochemistry analysis of paraffin-embedded Human testis using NUP98 antibody. High-pressure and temperature Sodium Citrate pH 6.0 was used for antigen retrieval.

## Note

For research use only.