

Product Name: Integrin beta 1 Rabbit Polyclonal Antibody
Catalog #: APRab00043

Summary

Production Name	Integrin beta 1 Rabbit Polyclonal Antibody
Description	Primary antibody
Host	Rabbit
Application	WB,IHC-P
Reactivity	Human,Mouse,Rat

Performance

Conjugation	Unconjugated
Modification	Unmodified
Isotype	IgG
Clonality	Polyclonal Antibody
Form	Liquid
Storage	Store at 4°C short term. Aliquot and store at -20°C long term. Avoid freeze/thaw cycles.
Buffer	Rabbit IgG in phosphate buffered saline , pH 7.4, 150mM NaCl, 0.02% sodium azide and 50% glycerol.
Purification	Affinity Chromatography

Immunogen

Gene Name	ITGB1
Alternative Names	ITGB1; FNRB; MDF2; MSK12; Integrin beta-1; Fibronectin receptor subunit beta; VLA-4 subunit beta; CD antigen CD29
Gene ID	3688
SwissProt ID	P05556

Application

Dilution Ratio	WB: 1/500-1/1000 IHC: 1/50-1/100
Molecular Weight	Calculated MW: 88 kDa; Observed MW: 140 kDa

Product Name: Integrin beta 1 Rabbit Polyclonal Antibody
Catalog #: APRab00043

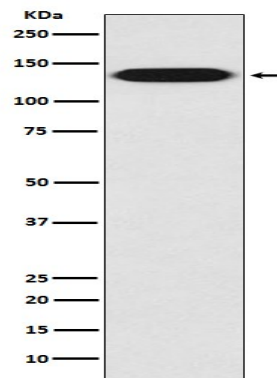
Background

Integrins are α/β heterodimeric cell surface receptors that play a pivotal role in cell adhesion and migration, as well as in growth and survival. The integrin family contains at least 18 α and 8 β subunits that form 24 known integrins with distinct tissue distribution and overlapping ligand specificities.

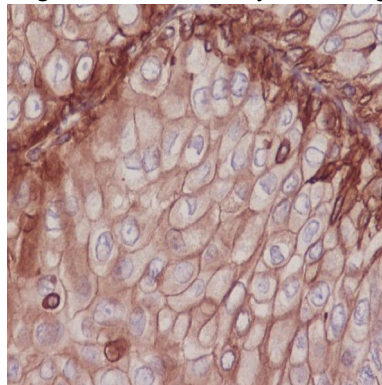
Research Area

Neuroscience

Image Data



Western blot analysis of Integrin beta 1 in A431 lysates using Integrin beta 1 antibody.



Immunohistochemistry analysis of paraffin-embedded Human breast cancer using Integrin beta 1 antibody. High-pressure and temperature Sodium Citrate pH 6.0 was used for antigen retrieval.

Note

For research use only.