

## Summary

<b>Production Name</b>	Hsc70 Rabbit Polyclonal Antibody
<b>Description</b>	Primary antibody
<b>Host</b>	Rabbit
<b>Application</b>	WB,IHC-P,ICC/IF,FC,IP
<b>Reactivity</b>	Human,Mouse,Rat

## Performance

<b>Conjugation</b>	Unconjugated
<b>Modification</b>	Unmodified
<b>Isotype</b>	IgG
<b>Clonality</b>	Polyclonal Antibody
<b>Form</b>	Liquid
<b>Storage</b>	Store at 4°C short term. Aliquot and store at -20°C long term. Avoid freeze/thaw cycles.
<b>Buffer</b>	Rabbit IgG in phosphate buffered saline , pH 7.4, 150mM NaCl, 0.02% sodium azide and 50% glycerol.
<b>Purification</b>	Affinity Chromatography

## Immunogen

<b>Gene Name</b>	HSPA8
<b>Alternative Names</b>	Heat shock cognate 71 kDa protein (Heat shock 70 kDa protein 8)
<b>Gene ID</b>	3312
<b>SwissProt ID</b>	P11142

## Application

<b>Dilution Ratio</b>	WB: 1/500-1/1000 IHC: 1/50-1/100 IF: 1/50-1/200 IP: 1/20 FC: 1/50-1/100
<b>Molecular Weight</b>	Calculated MW: 71 kDa; Observed MW: 71 kDa

**Product Name: Hsc70 Rabbit Polyclonal Antibody**  
**Catalog #: APRab00037**



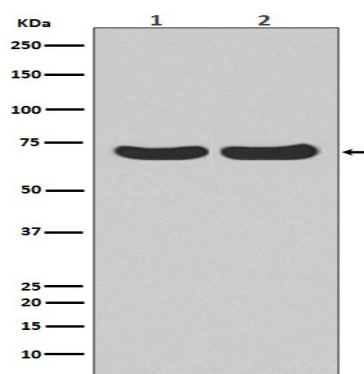
## Background

Acts as a repressor of transcriptional activation. Inhibits the transcriptional coactivator activity of CITED1 on Smad-mediated transcription. Chaperone. Component of the PRP19-CDC5L complex that forms an integral part of the spliceosome and is required for activating pre-mRNA splicing.

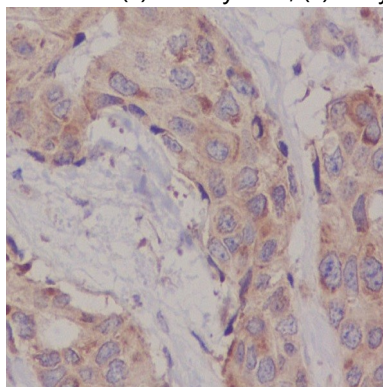
## Research Area

Signal Transduction

## Image Data

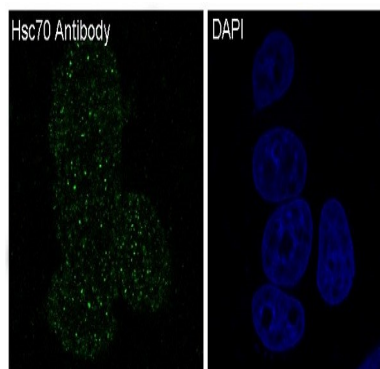


Western blot analysis of Calreticulin in (1) HeLa lysates; (2) C6 lysates using Hsc70 antibody.



Immunohistochemistry analysis of paraffin-embedded Human breast cancer using Hsc70 antibody. High-pressure and temperature Sodium Citrate pH 6.0 was used for antigen retrieval.

**Product Name: Hsc70 Rabbit Polyclonal Antibody**  
**Catalog #: APRab00037**



Immunofluorescence analysis of Hsc70 in MCF-7 using Hsc70 antibody.

**Note**

For research use only.