

Product Name: gamma Tubulin Rabbit Polyclonal Antibody
Catalog #: APRab00035

Summary

Production Name	gamma Tubulin Rabbit Polyclonal Antibody
Description	Primary antibody
Host	Rabbit
Application	WB,IHC-P,ICC/IF,FC,IP
Reactivity	Human,Mouse,Rat,Monkey,Chicken,Hamster,Cow,Dog,Fish,Xenopus,Tropicalis

Performance

Conjugation	Unconjugated
Modification	Unmodified
Isotype	IgG
Clonality	Polyclonal Antibody
Form	Liquid
Storage	Store at 4°C short term. Aliquot and store at -20°C long term. Avoid freeze/thaw cycles.
Buffer	Rabbit IgG in phosphate buffered saline , pH 7.4, 150mM NaCl, 0.02% sodium azide and 50% glycerol.
Purification	Affinity Chromatography

Immunogen

Gene Name	TUBG1
Alternative Names	TUBG1; TUBG; Tubulin gamma-1 chain; Gamma-1-tubulin; Gamma-tubulin complex component 1; GCP-1
Gene ID	7283
SwissProt ID	P23258

Application

Dilution Ratio	WB: 1/500-1/1000 IHC: 1/50-1/100 IF: 1/50-1/200 IP: 1/20 FC: 1/50-1/100
-----------------------	---

Product Name: gamma Tubulin Rabbit Polyclonal Antibody
Catalog #: APRab00035

Molecular Weight

Calculated MW: 51 kDa; Observed MW: 48 kDa

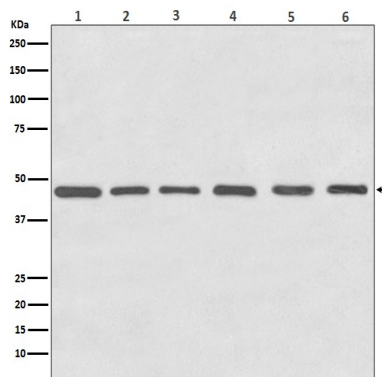
Background

TUBG1 Tubulin is the major constituent of microtubules. Gamma tubulin is found at microtubule organizing centers (MTOC) such as the spindle poles or the centrosome. Pericentriolar matrix component that regulates alpha/beta tubulin minus-end nucleation, centrosome duplication and spindle formation. Interacts with GCP2 and GCP3. Interacts with B9D2. Interacts with CDK5RAP2;

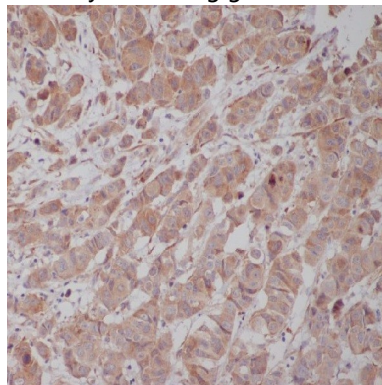
Research Area

Signal Transduction

Image Data



Western blot analysis of Tubulin gamma in (1) HeLa lysates; (2) NIH 3T3 lysates; (3) C6 lysates; (4) Zebrafish lysates; (5) COS1 lysates; (6) MDCK lysates using gamma Tubulin antibody.



Immunohistochemistry analysis of paraffin-embedded Human breast cancer using Tubulin gamma antibody. High-pressure and temperature Sodium Citrate pH 6.0 was used for antigen retrieval.

**Product Name: gamma Tubulin Rabbit Polyclonal
Antibody**
Catalog #: APRab00035



Note

For research use only.