
Summary

Production Name	Cyclophilin B Rabbit Polyclonal Antibody
Description	Primary antibody
Host	Rabbit
Application	WB
Reactivity	Human,Mouse,Rat

Performance

Conjugation	Unconjugated
Modification	Unmodified
Isotype	IgG
Clonality	Polyclonal Antibody
Form	Liquid
Storage	Store at 4°C short term. Aliquot and store at -20°C long term. Avoid freeze/thaw cycles.
Buffer	Rabbit IgG in phosphate buffered saline , pH 7.4, 150mM NaCl, 0.02% sodium azide and 50% glycerol.
Purification	Affinity Chromatography

Immunogen

Gene Name	PPIB
Alternative Names	PPIB; CYPB; Peptidyl-prolyl cis-trans isomerase B; PPlase B; CYP-S1; Cyclophilin B; Rotamase B; S-cyclophilin; SCYLP
Gene ID	5479
SwissProt ID	P23284

Application

Dilution Ratio	WB: 1/500-1/1000
Molecular Weight	Calculated MW: 24 kDa; Observed MW: 18 kDa

Product Name: Cyclophilin B Rabbit Polyclonal Antibody
Catalog #: APRab00033



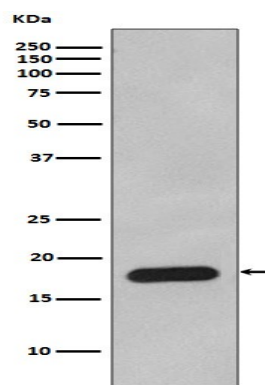
Background

PPlases accelerate the folding of proteins. It catalyzes the cis-trans isomerization of proline imidic peptide bonds in oligopeptides.

Research Area

Immunology

Image Data



Western blot analysis of Cyclophilin B in HepG2 lysates using Cyclophilin B antibody.

Note

For research use only.