

## Summary

|                        |                                 |
|------------------------|---------------------------------|
| <b>Production Name</b> | SHP1 Rabbit Polyclonal Antibody |
| <b>Description</b>     | Primary antibody                |
| <b>Host</b>            | Rabbit                          |
| <b>Application</b>     | WB,IHC-P                        |
| <b>Reactivity</b>      | Human,Mouse,Rat                 |

## Performance

|                     |  |
|---------------------|--|
| <b>Conjugation</b>  | Unconjugated   |
| <b>Modification</b> | Unmodified   |
| <b>Isotype</b>      | IgG  |
| <b>Clonality</b>    | Polyclonal Antibody  |
| <b>Form</b>         | Liquid   |
| <b>Storage</b>      | Store at 4°C short term. Aliquot and store at -20°C long term. Avoid freeze/thaw cycles.           |
| <b>Buffer</b>       | Rabbit IgG in phosphate buffered saline , pH 7.4, 150mM NaCl, 0.02% sodium azide and 50% glycerol. |
| <b>Purification</b> | Affinity Chromatography  |

## Immunogen

|                          |   |
|--------------------------|---|
| <b>Gene Name</b>         | PTPN6<br>PTPN6; HCP; PTP1C; Tyrosine-protein phosphatase non-receptor type 6;   |
| <b>Alternative Names</b> | Hematopoietic cell protein-tyrosine phosphatase; Protein-tyrosine phosphatase 1C; PTP-1C; Protein-tyrosine phosphatase SHP-1; SH-PTP1 |
| <b>Gene ID</b>           | 5777  |
| <b>SwissProt ID</b>      | P29350  |

## Application

|                         |  |
|-------------------------|--|
| <b>Dilution Ratio</b>   | WB: 1/500-1/1000 IHC: 1/50-1/100           |
| <b>Molecular Weight</b> | Calculated MW: 68 kDa; Observed MW: 68 kDa |

**Product Name: SHP1 Rabbit Polyclonal Antibody**  
**Catalog #: APRab00029**



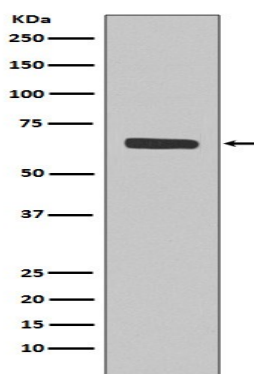
## Background

The protein encoded by this gene is a member of the protein tyrosine phosphatase (PTP) family. PTPs are known to be signaling molecules that regulate a variety of cellular processes including cell growth, differentiation, mitotic cycle, and oncogenic transformation.

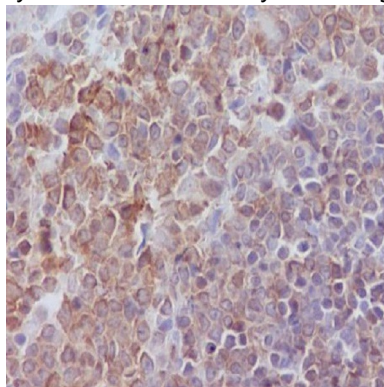
## Research Area

Cell Biology

## Image Data



Western blot analysis of SHP1 in Jurkat lysates using SHP1 antibody.



Immunohistochemistry analysis of paraffin-embedded rat spleen using SHP1 antibody. High-pressure and temperature Sodium Citrate pH 6.0 was used for antigen retrieval.

## Note

For research use only.