

**Product Name: OTX1 Rabbit Polyclonal Antibody**  
**Catalog #: APRab00018**



---

## Summary

<b>Production Name</b>	OTX1 Rabbit Polyclonal Antibody
<b>Description</b>	Primary antibody
<b>Host</b>	Rabbit
<b>Application</b>	WB
<b>Reactivity</b>	Human,Mouse,Rat

## Performance

<b>Conjugation</b>	Unconjugated
<b>Modification</b>	Unmodified
<b>Isotype</b>	IgG
<b>Clonality</b>	Polyclonal Antibody
<b>Form</b>	Liquid
<b>Storage</b>	Store at 4°C short term. Aliquot and store at -20°C long term. Avoid freeze/thaw cycles.
<b>Buffer</b>	Rabbit IgG in phosphate buffered saline , pH 7.4, 150mM NaCl, 0.02% sodium azide and 50% glycerol.
<b>Purification</b>	Affinity Chromatography

## Immunogen

<b>Gene Name</b>	OTX1
<b>Alternative Names</b>	Homeobox protein OTX1 (Orthodenticle homolog 1)
<b>Gene ID</b>	5013
<b>SwissProt ID</b>	P32242

## Application

<b>Dilution Ratio</b>	WB: 1/500-1/1000
<b>Molecular Weight</b>	Calculated MW: 37 kDa; Observed MW: 37 kDa

## Background

---

**Product Name: OTX1 Rabbit Polyclonal Antibody**  
**Catalog #: APRab00018**

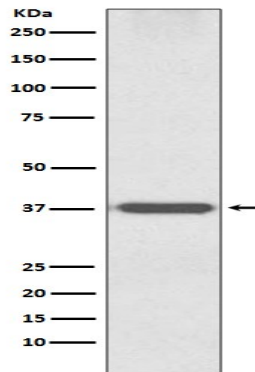


Probably plays a role in the development of the brain and the sense organs. Can bind to the BCD target sequence (BTS): 5'-TCTAATCCC-3'.

## Research Area

Neuroscience

## Image Data



Western blot analysis of Otx1 in mouse brain lysates using OTX1 antibody.

## Note

For research use only.