

Summary

Production Name	CKII alpha Rabbit Polyclonal Antibody
Description	Primary antibody
Host	Rabbit
Application	WB,IHC-P,FC
Reactivity	Human,Mouse,Rat

Performance

Conjugation	Unconjugated
Modification	Unmodified
Isotype	IgG
Clonality	Polyclonal Antibody
Form	Liquid
Storage	Store at 4°C short term. Aliquot and store at -20°C long term. Avoid freeze/thaw cycles.
Buffer	Rabbit IgG in phosphate buffered saline , pH 7.4, 150mM NaCl, 0.02% sodium azide and 50% glycerol.
Purification	Affinity Chromatography

Immunogen

Gene Name	CSNK2A1
Alternative Names	CSNK2A1; CK2A1; Casein kinase II subunit alpha; CK II alpha
Gene ID	1457
SwissProt ID	P68400

Application

Dilution Ratio	WB: 1/500-1/1000 IHC: 1/50-1/100 FC: 1/50-1/100
Molecular Weight	Calculated MW: 45 kDa; Observed MW: 45 kDa

Background

Product Name: CKII alpha Rabbit Polyclonal Antibody
Catalog #: APRab00014

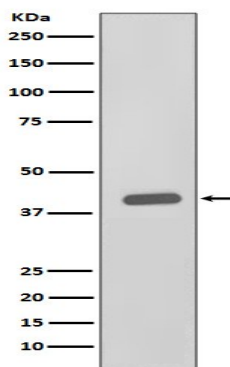


Catalytic subunit of a constitutively active serine/threonine-protein kinase complex that phosphorylates a large number of substrates containing acidic residues C-terminal to the phosphorylated serine or threonine. Regulates numerous cellular processes, such as cell cycle progression, apoptosis and transcription, as well as viral infection. May act as a regulatory node which integrates and coordinates numerous signals leading to an appropriate cellular response.

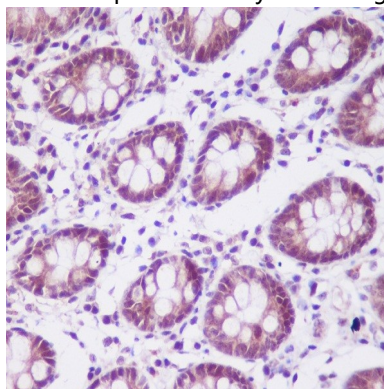
Research Area

Cell Biology

Image Data



Western blot analysis of CKII alpha in HeLa lysates using CKII alpha antibody.



Immunohistochemistry analysis of paraffin-embedded Human colon using CKII alpha antibody. High-pressure and temperature Sodium Citrate pH 6.0 was used for antigen retrieval.

Note

For research use only.