

**Product Name: Wnt16 (16S11) Rabbit Monoclonal Antibody**  
**Catalog #: AMRe19916**



## Summary

<b>Production Name</b>	Wnt16 (16S11) Rabbit Monoclonal Antibody
<b>Description</b>	Rabbit Monoclonal Antibody
<b>Host</b>	Rabbit
<b>Application</b>	WB,ELISA
<b>Reactivity</b>	Human,Mouse,Rat

## Performance

<b>Conjugation</b>	Unconjugated
<b>Modification</b>	Unmodified
<b>Isotype</b>	IgG
<b>Clonality</b>	Monoclonal
<b>Form</b>	Liquid
<b>Storage</b>	Store at 4°C short term. Aliquot and store at -20°C long term. Avoid freeze/thaw cycles.
<b>Buffer</b>	Rabbit IgG in phosphate buffered saline , pH 7.4, 150mM NaCl, 0.02% New type preservative N and 50% glycerol. Store at +4°C short term. Store at -20°C long term. Avoid freeze / thaw cycle.
<b>Purification</b>	Affinity purification

## Immunogen

<b>Gene Name</b>	WNT16
<b>Alternative Names</b>	WNT16;
<b>Gene ID</b>	51384.0
<b>SwissProt ID</b>	Q9UBV4.

## Application

<b>Dilution Ratio</b>	WB 1:500-1:2000
<b>Molecular Weight</b>	41kDa

**Product Name: Wnt16 (16S11) Rabbit Monoclonal Antibody**  
**Catalog #: AMRe19916**



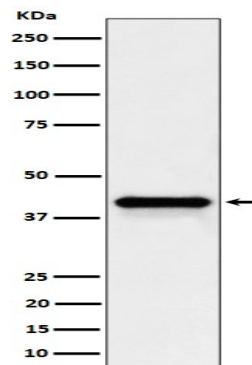
---

## Background

Ligand for members of the frizzled family of seven transmembrane receptors. Probable developmental protein. May be a signaling molecule which affects the development of discrete regions of tissues. Is likely to signal over only few cell diameters. Ligand for members of the frizzled family of seven transmembrane receptors. Probable developmental protein. May be a signaling molecule which affects the development of discrete regions of tissues. Is likely to signal over only few cell diameters (By similarity).

## Research Area

## Image Data



Western blot analysis of Wnt16 expression in HepG2 cell lysate.

## Note

For research use only.