

**Product Name: UBF1 (13A11) Rabbit Monoclonal Antibody**  
**Catalog #: AMRe19539**

---

## Summary

<b>Production Name</b>	UBF1 (13A11) Rabbit Monoclonal Antibody
<b>Description</b>	Rabbit Monoclonal Antibody
<b>Host</b>	Rabbit
<b>Application</b>	WB
<b>Reactivity</b>	Human,Mouse,Rat

## Performance

<b>Conjugation</b>	Unconjugated
<b>Modification</b>	Unmodified
<b>Isotype</b>	IgG
<b>Clonality</b>	Monoclonal
<b>Form</b>	Liquid
<b>Storage</b>	Store at 4°C short term. Aliquot and store at -20°C long term. Avoid freeze/thaw cycles.
<b>Buffer</b>	Supplied in 50mM Tris-Glycine(pH 7.4), 0.15M NaCl, 40%Glycerol, 0.01% New type preservative N and 0.05% BSA.
<b>Purification</b>	Affinity purification

## Immunogen

<b>Gene Name</b>	UBTF
<b>Alternative Names</b>	NOR 90; UBF; Ubtf;
<b>Gene ID</b>	7343.0
<b>SwissProt ID</b>	P17480.A synthetic peptide of human UBF1

## Application

<b>Dilution Ratio</b>	WB: 1:1000
<b>Molecular Weight</b>	89kDa

## Background

---

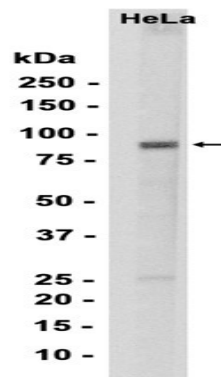
**Product Name: UBF1 (13A11) Rabbit Monoclonal Antibody**  
**Catalog #: AMRe19539**

---

Recognizes the ribosomal RNA gene promoter and activates transcription mediated by RNA polymerase I through cooperative interactions with the transcription factor SL1/TIF-IB complex. It binds specifically to the upstream control element. Recognizes the ribosomal RNA gene promoter and activates transcription mediated by RNA polymerase I through cooperative interactions with the transcription factor SL1/TIF-IB complex. It binds specifically to the upstream control element.

## Research Area

## Image Data



Western blot analysis of extracts from HeLa cells using RM7200 at 1:1000.

## Note

For research use only.