

**Product Name: SPTA1 (10A17) Rabbit Monoclonal Antibody**  
**Catalog #: AMRe18226**



## Summary

<b>Production Name</b>	SPTA1 (10A17) Rabbit Monoclonal Antibody
<b>Description</b>	Rabbit Monoclonal Antibody
<b>Host</b>	Rabbit
<b>Application</b>	WB,ELISA
<b>Reactivity</b>	Human

## Performance

<b>Conjugation</b>	Unconjugated
<b>Modification</b>	Unmodified
<b>Isotype</b>	IgG
<b>Clonality</b>	Monoclonal
<b>Form</b>	Liquid
<b>Storage</b>	Store at 4°C short term. Aliquot and store at -20°C long term. Avoid freeze/thaw cycles.
<b>Buffer</b>	Rabbit IgG in phosphate buffered saline , pH 7.4, 150mM NaCl, 0.02% New type preservative N and 50% glycerol. Store at +4°C short term. Store at -20°C long term. Avoid freeze / thaw cycle.
<b>Purification</b>	Affinity purification

## Immunogen

<b>Gene Name</b>	SPTA1
<b>Alternative Names</b>	EL2; Elliptocytosis2; erythrocyte; Erythroid alpha spectrin; HS3; SPH3; SPTA; SPTA1;
<b>Gene ID</b>	6708.0
<b>SwissProt ID</b>	P02549.

## Application

<b>Dilution Ratio</b>	WB 1:500-1:2000
<b>Molecular Weight</b>	280kDa

**Product Name: SPTA1 (10A17) Rabbit Monoclonal Antibody**  
**Catalog #: AMRe18226**



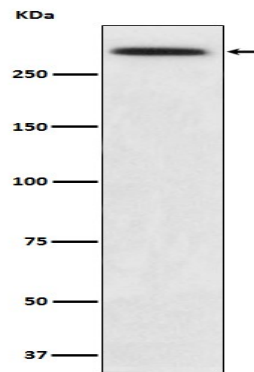
---

## Background

Spectrin is the major constituent of the cytoskeletal network underlying the erythrocyte plasma membrane. It associates with band 4.1 and actin to form the cytoskeletal superstructure of the erythrocyte plasma membrane. Spectrin is the major constituent of the cytoskeletal network underlying the erythrocyte plasma membrane. It associates with band 4.1 and actin to form the cytoskeletal superstructure of the erythrocyte plasma membrane.

## Research Area

## Image Data



Western blot analysis of SPTA1 expression in K562 cell lysate.

## Note

For research use only.