

**Product Name: Sodium Potassium ATPase (14S2) Rabbit
Monoclonal Antibody
Catalog #: AMRe18101**

Summary

Production Name	Sodium Potassium ATPase (14S2) Rabbit Monoclonal Antibody
Description	Rabbit Monoclonal Antibody
Host	Rabbit
Application	WB
Reactivity	Human,Mouse,Rat

Performance

Conjugation	Unconjugated
Modification	Unmodified
Isotype	IgG
Clonality	Monoclonal
Form	Liquid
Storage	Store at 4°C short term. Aliquot and store at -20°C long term. Avoid freeze/thaw cycles.
Buffer	Rabbit IgG in phosphate buffered saline , pH 7.4, 150mM NaCl, 0.02% New type preservative N and 50% glycerol. Store at +4°C short term. Store at -20°C long term. Avoid freeze / thaw cycle.
Purification	Affinity purification

Immunogen

Gene Name	ATP1A1
Alternative Names	A1A1; AT1A1; ATP1A1; Na ⁺ /K ⁺ transporting; alpha 1 polypeptide; Na ⁺ /K ⁺ ATPase 1; Na,K-ATPase 1; Sodium pump 1;
Gene ID	476.0
SwissProt ID	P05023.

Application

Dilution Ratio	WB 1:5000-1:10000
Molecular Weight	113kDa

**Product Name: Sodium Potassium ATPase (14S2) Rabbit
Monoclonal Antibody
Catalog #: AMRe18101**

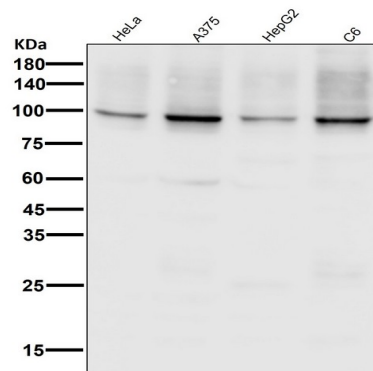


Background

This is the catalytic component of the active enzyme, which catalyzes the hydrolysis of ATP coupled with the exchange of sodium and potassium ions across the plasma membrane. This action creates the electrochemical gradient of sodium and potassium ions, providing the energy for active transport of various nutrients. This is the catalytic component of the active enzyme, which catalyzes the hydrolysis of ATP coupled with the exchange of sodium and potassium ions across the plasma membrane. This action creates the electrochemical gradient of sodium and potassium ions, providing the energy for active transport of various nutrients.

Research Area

Image Data



All lanes use Sodium Potassium ATPase Antibody at 1:50000 dilution for 1 hour at room temperature.

Note

For research use only.