

**Product Name: SOD2 (12J6) Rabbit Monoclonal Antibody**  
**Catalog #: AMRe18098**

---

## Summary

<b>Production Name</b>	SOD2 (12J6) Rabbit Monoclonal Antibody
<b>Description</b>	Rabbit Monoclonal Antibody
<b>Host</b>	Rabbit
<b>Application</b>	WB,ELISA
<b>Reactivity</b>	Human,Mouse,Rat

## Performance

<b>Conjugation</b>	Unconjugated
<b>Modification</b>	Unmodified
<b>Isotype</b>	IgG
<b>Clonality</b>	Monoclonal
<b>Form</b>	Liquid
<b>Storage</b>	Store at 4°C short term. Aliquot and store at -20°C long term. Avoid freeze/thaw cycles.
<b>Buffer</b>	Rabbit IgG in phosphate buffered saline , pH 7.4, 150mM NaCl, 0.02% New type preservative N and 50% glycerol. Store at +4°C short term. Store at -20°C long term. Avoid freeze / thaw cycle.
<b>Purification</b>	Affinity purification

## Immunogen

<b>Gene Name</b>	SOD2
<b>Alternative Names</b>	SOD2; IPOB; MNSOD; MVCD6;
<b>Gene ID</b>	6648.0
<b>SwissProt ID</b>	P04179.

## Application

<b>Dilution Ratio</b>	WB 1:500-1:2000
<b>Molecular Weight</b>	25kDa

**Product Name: SOD2 (12J6) Rabbit Monoclonal Antibody**  
**Catalog #: AMRe18098**

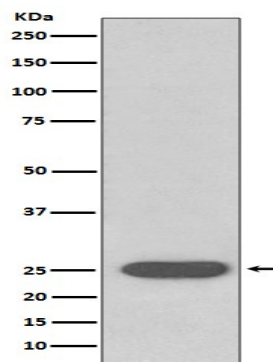
---

## Background

SOD-2 is a homotetrameric manganese enzyme (also known as MnSOD) that functions in the mitochondrion. ROS are implicated in a wide range of degenerative processes, including Alzheimer' s disease, Parkinson' s disease and ischemic heart disease. Homozygous mutant mice, which lack SOD-2, exhibit dilated cardiomyopathy, accumulation of lipid in liver and skeletal muscle, metabolic acidosis, oxidative DNA damage and respiratory chain deficiencies in heart and skeletal muscle. Destroys superoxide anion radicals which are normally produced within the cells and which are toxic to biological systems.

## Research Area

## Image Data



Western blot analysis of SOD2 expression in Rat brain lysate.

## Note

For research use only.