

Product Name: SLC6A1 / GAT1 (9T4) Rabbit Monoclonal Antibody
Catalog #: AMRe17960

Summary

Production Name	SLC6A1 / GAT1 (9T4) Rabbit Monoclonal Antibody
Description	Rabbit Monoclonal Antibody
Host	Rabbit
Application	WB,ELISA
Reactivity	Human,Mouse,Rat

Performance

Conjugation	Unconjugated
Modification	Unmodified
Isotype	IgG
Clonality	Monoclonal
Form	Liquid
Storage	Store at 4°C short term. Aliquot and store at -20°C long term. Avoid freeze/thaw cycles.
Buffer	Rabbit IgG in phosphate buffered saline , pH 7.4, 150mM NaCl, 0.02% New type preservative N and 50% glycerol. Store at +4°C short term. Store at -20°C long term. Avoid freeze / thaw cycle.
Purification	Affinity purification

Immunogen

Gene Name	SLC6A1
Alternative Names	GABATHG; GABATR; GABT1; GAT1; Slc6a1;
Gene ID	6529.0
SwissProt ID	P30531.

Application

Dilution Ratio	WB 1:500-1:2000
Molecular Weight	67kDa

Product Name: SLC6A1 / GAT1 (9T4) Rabbit Monoclonal Antibody
Catalog #: AMRe17960

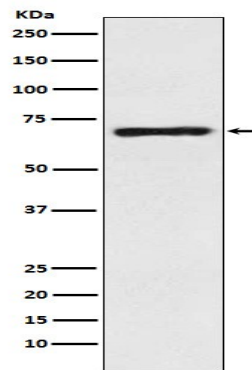


Background

Terminates the action of GABA by its high affinity sodium-dependent reuptake into presynaptic terminals. Terminates the action of GABA by its high affinity sodium- dependent reuptake into presynaptic terminals.

Research Area

Image Data



Western blot analysis of GABA Transporter 1 / GAT 1 expression in Human fetal brain lysate.

Note

For research use only.