

Product Name: SERPINA1 (2F7) Rabbit Monoclonal Antibody
Catalog #: AMRe17765



Summary

Production Name	SERPINA1 (2F7) Rabbit Monoclonal Antibody
Description	Rabbit Monoclonal Antibody
Host	Rabbit
Application	WB,ELISA
Reactivity	Human

Performance

Conjugation	Unconjugated
Modification	Unmodified
Isotype	IgG
Clonality	Monoclonal
Form	Liquid
Storage	Store at 4°C short term. Aliquot and store at -20°C long term. Avoid freeze/thaw cycles.
Buffer	Rabbit IgG in phosphate buffered saline , pH 7.4, 150mM NaCl, 0.02% New type preservative N and 50% glycerol. Store at +4°C short term. Store at -20°C long term. Avoid freeze / thaw cycle.
Purification	Affinity purification

Immunogen

Gene Name	SERPINA1
Alternative Names	Serpin A1; Short peptide from AAT; SPAAT; AAT;
Gene ID	5265.0
SwissProt ID	P01009.

Application

Dilution Ratio	WB 1:500-1:2000
Molecular Weight	47kDa

Product Name: SERPINA1 (2F7) Rabbit Monoclonal Antibody
Catalog #: AMRe17765

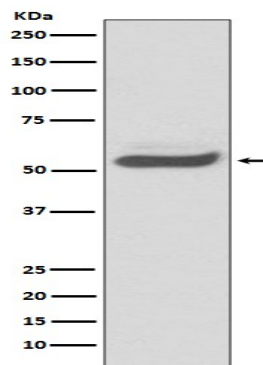


Background

SERPINA1 is secreted and is a serine protease inhibitor which its targets include elastase, plasmin, collagenase, thrombin, leucocytic proteases, trypsin, chymotrypsin, and plasminogen activator. Inhibitor of serine proteases. Its primary target is elastase, but it also has a moderate affinity for plasmin and thrombin. Inhibitor of serine proteases. Its primary target is elastase, but it also has a moderate affinity for plasmin and thrombin. Irreversibly inhibits trypsin, chymotrypsin and plasminogen activator. The aberrant form inhibits insulin-induced NO synthesis in platelets, decreases coagulation time and has proteolytic activity against insulin and plasmin.

Research Area

Image Data



Western blot analysis of SERPINA1 expression in human fetal kidney lysate.

Note

For research use only.