

**Product Name: SERCA2 (13M14) Rabbit Monoclonal Antibody**  
**Catalog #: AMRe17748**



## Summary

<b>Production Name</b>	SERCA2 (13M14) Rabbit Monoclonal Antibody
<b>Description</b>	Rabbit Monoclonal Antibody
<b>Host</b>	Rabbit
<b>Application</b>	WB
<b>Reactivity</b>	Human,Mouse,Rat

## Performance

<b>Conjugation</b>	Unconjugated
<b>Modification</b>	Unmodified
<b>Isotype</b>	IgG
<b>Clonality</b>	Monoclonal
<b>Form</b>	Liquid
<b>Storage</b>	Store at 4°C short term. Aliquot and store at -20°C long term. Avoid freeze/thaw cycles.
<b>Buffer</b>	Supplied in 50mM Tris-Glycine(pH 7.4), 0.15M NaCl, 40%Glycerol, 0.01% New type preservative N and 0.05% BSA.
<b>Purification</b>	Affinity purification

## Immunogen

<b>Gene Name</b>	ATP2A2
<b>Alternative Names</b>	SERCA2; Calcium pump 2; ATP2B;
<b>Gene ID</b>	488.0
<b>SwissProt ID</b>	P16615.A synthetic peptide of human SERCA2 ATPase

## Application

<b>Dilution Ratio</b>	WB: 1:2000-1:10000
<b>Molecular Weight</b>	115kDa

## Background

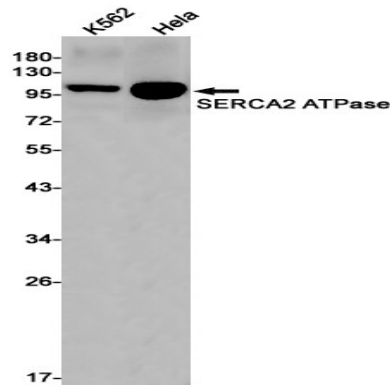
**Product Name: SERCA2 (13M14) Rabbit Monoclonal Antibody**  
**Catalog #: AMRe17748**



This magnesium-dependent enzyme catalyzes the hydrolysis of ATP coupled with the translocation of calcium from the cytosol to the sarcoplasmic reticulum lumen. Isoform 2 is involved in the regulation of the contraction/relaxation cycle. This magnesium-dependent enzyme catalyzes the hydrolysis of ATP coupled with the translocation of calcium from the cytosol to the sarcoplasmic reticulum lumen (PubMed:<a href="http://www.uniprot.org/citations/16402920" target="\_blank">16402920</a>). Involved in autophagy in response to starvation. Upon interaction with VMP1 and activation, controls ER-isolation membrane contacts for autophagosome formation (PubMed:<a href="http://www.uniprot.org/citations/28890335" target="\_blank">28890335</a>). Also modulates ER contacts with lipid droplets, mitochondria and endosomes (PubMed:<a href="http://www.uniprot.org/citations/28890335" target="\_blank">28890335</a>).

## Research Area

## Image Data



Western blot detection of SERCA2 ATPase in K562, HeLa cell lysates using SERCA2 ATPase antibody (1:1000 diluted).

## Note

For research use only.