

Product Name: SEC24D (8B14) Rabbit Monoclonal Antibody
Catalog #: AMRe17693

Summary

Production Name	SEC24D (8B14) Rabbit Monoclonal Antibody
Description	Rabbit Monoclonal Antibody
Host	Rabbit
Application	WB
Reactivity	Human,Mouse,Rat

Performance

Conjugation	Unconjugated
Modification	Unmodified
Isotype	IgG
Clonality	Monoclonal
Form	Liquid
Storage	Store at 4°C short term. Aliquot and store at -20°C long term. Avoid freeze/thaw cycles.
Buffer	Supplied in 50mM Tris-Glycine(pH 7.4), 0.15M NaCl, 40%Glycerol, 0.01% New type preservative N and 0.05% BSA.
Purification	Affinity purification

Immunogen

Gene Name	SEC24D
Alternative Names	SEC24 family member D; SEC24D;
Gene ID	9871.0
SwissProt ID	O94855.A synthetic peptide of human SEC24D

Application

Dilution Ratio	WB: 1:1000
Molecular Weight	113kDa

Background

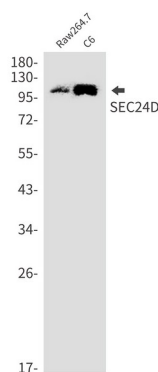
Product Name: SEC24D (8B14) Rabbit Monoclonal Antibody
Catalog #: AMRe17693



Component of the COPII coat, that covers ER-derived vesicles involved in transport from the endoplasmic reticulum to the Golgi apparatus. COPII acts in the cytoplasm to promote the transport of secretory, plasma membrane, and vacuolar proteins from the endoplasmic reticulum to the Golgi complex. Component of the coat protein complex II (COPII) which promotes the formation of transport vesicles from the endoplasmic reticulum (ER). The coat has two main functions, the physical deformation of the endoplasmic reticulum membrane into vesicles and the selection of cargo molecules for their transport to the Golgi complex (PubMed: [17499046](http://www.uniprot.org/citations/17499046), PubMed: [20427317](http://www.uniprot.org/citations/20427317), PubMed: [18843296](http://www.uniprot.org/citations/18843296)). Plays a central role in cargo selection within the COPII complex and together with SEC24C may have a different specificity compared to SEC24A and SEC24B (PubMed: [17499046](http://www.uniprot.org/citations/17499046), PubMed: [20427317](http://www.uniprot.org/citations/20427317), PubMed: [18843296](http://www.uniprot.org/citations/18843296)). May more specifically package GPI-anchored proteins through the cargo receptor TMED10 (PubMed: [20427317](http://www.uniprot.org/citations/20427317)). May also be specific for IxM motif-containing cargos like the SNAREs GOSR2 and STX5 (PubMed: [18843296](http://www.uniprot.org/citations/18843296)).

Research Area

Image Data



Western blot detection of SEC24D in HeLa, A549, HL-60 cell lysates using SEC24D antibody (1:1000 diluted).

Note

For research use only.