

Product Name: SAE1 (17L1) Rabbit Monoclonal Antibody
Catalog #: AMRe17572

Summary

Production Name	SAE1 (17L1) Rabbit Monoclonal Antibody
Description	Rabbit Monoclonal Antibody
Host	Rabbit
Application	WB
Reactivity	Human,Rat

Performance

Conjugation	Unconjugated
Modification	Unmodified
Isotype	IgG
Clonality	Monoclonal
Form	Liquid
Storage	Store at 4°C short term. Aliquot and store at -20°C long term. Avoid freeze/thaw cycles.
Buffer	Supplied in 50mM Tris-Glycine(pH 7.4), 0.15M NaCl, 40%Glycerol, 0.01% New type preservative N and 0.05% BSA.
Purification	Affinity purification

Immunogen

Gene Name	SAE1
Alternative Names	AOS1; HSPC140; Sae1; SUA1; UBLE1A;
Gene ID	10055.0
SwissProt ID	Q9UBE0.A synthetic peptide of human SAE1

Application

Dilution Ratio	WB: 1:2000-1:10000
Molecular Weight	39kDa

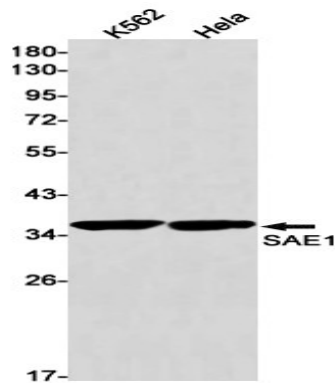
Background

Product Name: SAE1 (17L1) Rabbit Monoclonal Antibody
Catalog #: AMRe17572

The heterodimer acts as a E1 ligase for SUMO1, SUMO2, SUMO3, and probably SUMO4. It mediates ATP-dependent activation of SUMO proteins followed by formation of a thioester bond between a SUMO protein and a conserved active site cysteine residue on UBA2/SAE2. The heterodimer acts as an E1 ligase for SUMO1, SUMO2, SUMO3, and probably SUMO4. It mediates ATP-dependent activation of SUMO proteins followed by formation of a thioester bond between a SUMO protein and a conserved active site cysteine residue on UBA2/SAE2.

Research Area

Image Data



Western blot detection of SAE1 in K562, HeLa cell lysates using SAE1 antibody (1:1000 diluted).

Note

For research use only.