

Product Name: RRM1 (14K2) Rabbit Monoclonal Antibody
Catalog #: AMRe17383

Summary

Production Name	RRM1 (14K2) Rabbit Monoclonal Antibody
Description	Rabbit Monoclonal Antibody
Host	Rabbit
Application	WB
Reactivity	Human,Mouse,Rat

Performance

Conjugation	Unconjugated
Modification	Unmodified
Isotype	IgG
Clonality	Monoclonal
Form	Liquid
Storage	Store at 4°C short term. Aliquot and store at -20°C long term. Avoid freeze/thaw cycles.
Buffer	Supplied in 50mM Tris-Glycine(pH 7.4), 0.15M NaCl, 40%Glycerol, 0.01% New type preservative N and 0.05% BSA.
Purification	Affinity purification

Immunogen

Gene Name	RRM1
Alternative Names	RRM1; R1; RIR1; RR1;
Gene ID	6240.0
SwissProt ID	P23921.A synthetic peptide of human RRM1

Application

Dilution Ratio	WB: 1:2000-1:10000
Molecular Weight	90kDa

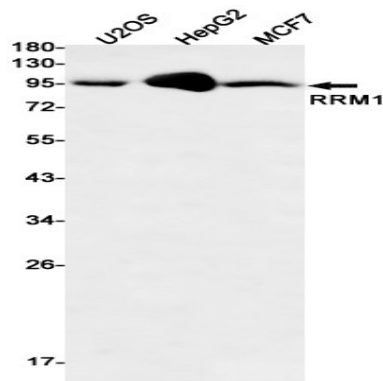
Background

Product Name: RRM1 (14K2) Rabbit Monoclonal Antibody
Catalog #: AMRe17383

Provides the precursors necessary for DNA synthesis. Catalyzes the biosynthesis of deoxyribonucleotides from the corresponding ribonucleotides. Provides the precursors necessary for DNA synthesis. Catalyzes the biosynthesis of deoxyribonucleotides from the corresponding ribonucleotides.

Research Area

Image Data



Western blot detection of RRM1 in U2OS,HepG2,MCF7 cell lysates using RRM1 antibody(1:500 diluted).

Note

For research use only.