

Product Name: RPS20 (7B14) Rabbit Monoclonal Antibody
Catalog #: AMRe17372

Summary

Production Name	RPS20 (7B14) Rabbit Monoclonal Antibody
Description	Rabbit Monoclonal Antibody
Host	Rabbit
Application	WB
Reactivity	Human,Mouse,Rat

Performance

Conjugation	Unconjugated
Modification	Unmodified
Isotype	IgG
Clonality	Monoclonal
Form	Liquid
Storage	Store at 4°C short term. Aliquot and store at -20°C long term. Avoid freeze/thaw cycles.
Buffer	Supplied in 50mM Tris-Glycine(pH 7.4), 0.15M NaCl, 40%Glycerol, 0.01% New type preservative N and 0.05% BSA.
Purification	Affinity purification

Immunogen

Gene Name	RPS20
Alternative Names	40S ribosomal protein S20; RS20; Ribosomal protein S20; RPS 20;
Gene ID	6224.0
SwissProt ID	P60866.A synthetic peptide of human RPS20

Application

Dilution Ratio	WB: 1:1000
Molecular Weight	13kDa

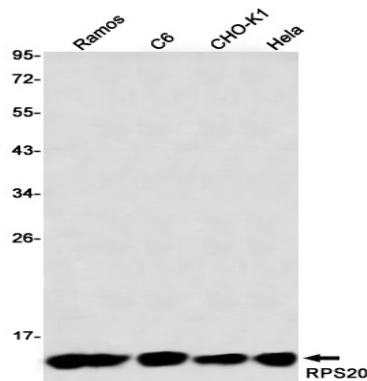
Background

Product Name: RPS20 (7B14) Rabbit Monoclonal Antibody
Catalog #: AMRe17372

RPS20 is a ribosomal protein that is a component of the 40S subunit. Ribosomes, the organelles that catalyze protein synthesis, consist of a small 40S subunit and a large 60S subunit. Together these subunits are composed of 4 RNA species and approximately 80 structurally distinct proteins. RPS20 belongs to the S10P family of ribosomal proteins and is located in the cytoplasm.

Research Area

Image Data



Western blot detection of RPS20 in HeLa,CHO-K1,C6,Ramos using RPS20 antibody(1:1000 diluted).

Note

For research use only.