

**Product Name: RFP (14R10) Rabbit Monoclonal Antibody**  
**Catalog #: AMRe17056**

---

## Summary

<b>Production Name</b>	RFP (14R10) Rabbit Monoclonal Antibody
<b>Description</b>	Rabbit Monoclonal Antibody
<b>Host</b>	Rabbit
<b>Application</b>	WB,ELISA
<b>Reactivity</b>	Rat

## Performance

<b>Conjugation</b>	Unconjugated
<b>Modification</b>	Unmodified
<b>Isotype</b>	IgG
<b>Clonality</b>	Monoclonal
<b>Form</b>	Liquid
<b>Storage</b>	Store at 4°C short term. Aliquot and store at -20°C long term. Avoid freeze/thaw cycles.
<b>Buffer</b>	Rabbit IgG in phosphate buffered saline , pH 7.4, 150mM NaCl, 0.02% New type preservative N and 50% glycerol. Store at +4°C short term. Store at -20°C long term. Avoid freeze / thaw cycle.
<b>Purification</b>	Affinity purification

## Immunogen

<b>Gene Name</b>	RFP
<b>Alternative Names</b>	GFP like chromoprotein; red fluorescent protein; Red fluorescent protein eqFP611; RFP;
<b>Gene ID</b>	
<b>SwissProt ID</b>	Q8ISF8.

## Application

<b>Dilution Ratio</b>	WB 1:1000-1:5000
<b>Molecular Weight</b>	26kDa

**Product Name: RFP (14R10) Rabbit Monoclonal Antibody**  
**Catalog #: AMRe17056**

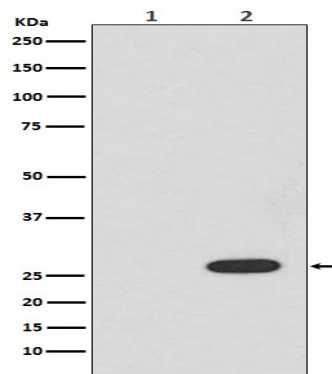
---

## Background

Red fluorescent protein cloned from *Entacmaea quadricolor* eqFP611 (Uniprot IDQ8ISF8) is an important tool in biotechnology and cell biology. Pigment protein.

## Research Area

## Image Data



Western blot analysis of RFP expression in (1) 293T cell lysate; (2) 293T cell lysate transfected with RFP.

## Note

For research use only.