

Product Name: Renin (11L9) Rabbit Monoclonal Antibody
Catalog #: AMRe17016

Summary

Production Name	Renin (11L9) Rabbit Monoclonal Antibody
Description	Rabbit Monoclonal Antibody
Host	Rabbit
Application	WB,ELISA
Reactivity	Human

Performance

Conjugation	Unconjugated
Modification	Unmodified
Isotype	IgG
Clonality	Monoclonal
Form	Liquid
Storage	Store at 4°C short term. Aliquot and store at -20°C long term. Avoid freeze/thaw cycles.
Buffer	Rabbit IgG in phosphate buffered saline , pH 7.4, 150mM NaCl, 0.02% New type preservative N and 50% glycerol. Store at +4°C short term. Store at -20°C long term. Avoid freeze / thaw cycle.
Purification	Affinity purification

Immunogen

Gene Name	REN
Alternative Names	Angiotensinogenase; HNFJ2; REN; Ren1; Renin;
Gene ID	5972.0
SwissProt ID	P00797.

Application

Dilution Ratio	WB 1:500-1:2000
Molecular Weight	45kDa

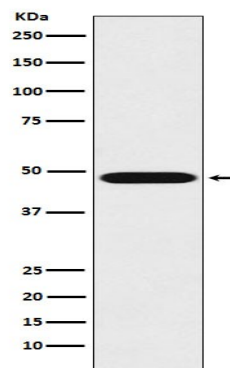
Product Name: Renin (11L9) Rabbit Monoclonal Antibody
Catalog #: AMRe17016

Background

Renin is a highly specific endopeptidase, whose only known function is to generate angiotensin I from angiotensinogen in the plasma, initiating a cascade of reactions that produce an elevation of blood pressure and increased sodium retention by the kidney. Renin is a highly specific endopeptidase, whose only known function is to generate angiotensin I from angiotensinogen in the plasma, initiating a cascade of reactions that produce an elevation of blood pressure and increased sodium retention by the kidney.

Research Area

Image Data



Western blot analysis of Renin expression in K562 cell lysate.

Note

For research use only.