

**Product Name: RASA1 (10P8) Rabbit Monoclonal Antibody**  
**Catalog #: AMRe16907**

---

## Summary

<b>Production Name</b>	RASA1 (10P8) Rabbit Monoclonal Antibody
<b>Description</b>	Rabbit Monoclonal Antibody
<b>Host</b>	Rabbit
<b>Application</b>	WB
<b>Reactivity</b>	Human,Mouse,Rat

## Performance

<b>Conjugation</b>	Unconjugated
<b>Modification</b>	Unmodified
<b>Isotype</b>	IgG
<b>Clonality</b>	Monoclonal
<b>Form</b>	Liquid
<b>Storage</b>	Store at 4°C short term. Aliquot and store at -20°C long term. Avoid freeze/thaw cycles.
<b>Buffer</b>	Supplied in 50mM Tris-Glycine(pH 7.4), 0.15M NaCl, 40%Glycerol, 0.01% New type preservative N and 0.05% BSA.
<b>Purification</b>	Affinity purification

## Immunogen

<b>Gene Name</b>	RASA1
<b>Alternative Names</b>	CMAVM; GAP; p120GAP; p120RASGAP; PKWS; RASA; RASA1; RasGAP;
<b>Gene ID</b>	5921.0
<b>SwissProt ID</b>	P20936.A synthetic peptide of human RASA1

## Application

<b>Dilution Ratio</b>	WB: 1:1000
<b>Molecular Weight</b>	116kDa

## Background

---

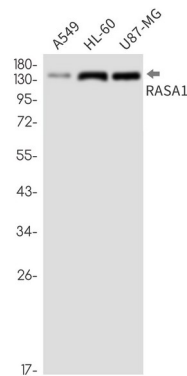
**Product Name: RASA1 (10P8) Rabbit Monoclonal Antibody**  
**Catalog #: AMRe16907**

---

Inhibitory regulator of the Ras-cyclic AMP pathway. Stimulates the GTPase of normal but not oncogenic Ras p21. Inhibitory regulator of the Ras-cyclic AMP pathway. Stimulates the GTPase of normal but not oncogenic Ras p21; this stimulation may be further increased in the presence of NCK1.

## Research Area

## Image Data



Western blot detection of RASA1 in A549,HL-60,U87-MG cell lysates using RASA1 antibody(1:1000 diluted).

## Note

For research use only.