

**Product Name: RAC3 (9M14) Rabbit Monoclonal Antibody**  
**Catalog #: AMRe16824**

---

## Summary

<b>Production Name</b>	RAC3 (9M14) Rabbit Monoclonal Antibody
<b>Description</b>	Rabbit Monoclonal Antibody
<b>Host</b>	Rabbit
<b>Application</b>	WB
<b>Reactivity</b>	Human,Mouse,Rat

## Performance

<b>Conjugation</b>	Unconjugated
<b>Modification</b>	Unmodified
<b>Isotype</b>	IgG
<b>Clonality</b>	Monoclonal
<b>Form</b>	Liquid
<b>Storage</b>	Store at 4°C short term. Aliquot and store at -20°C long term. Avoid freeze/thaw cycles.
<b>Buffer</b>	Supplied in 50mM Tris-Glycine(pH 7.4), 0.15M NaCl, 40%Glycerol, 0.01% New type preservative N and 0.05% BSA.
<b>Purification</b>	Affinity purification

## Immunogen

<b>Gene Name</b>	RAC3
<b>Alternative Names</b>	Rac1B; RAC3;
<b>Gene ID</b>	5881.0
<b>SwissProt ID</b>	P60763.A synthetic peptide of human RAC3

## Application

<b>Dilution Ratio</b>	WB: 1:1000
<b>Molecular Weight</b>	21kDa

## Background

---

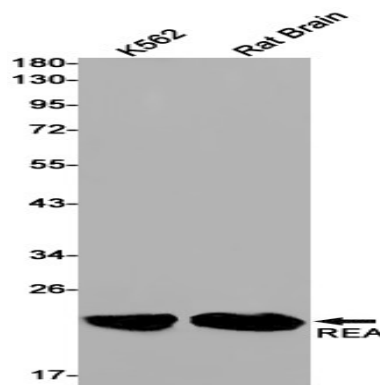
**Product Name: RAC3 (9M14) Rabbit Monoclonal Antibody**  
**Catalog #: AMRe16824**

---

Plasma membrane-associated small GTPase which cycles between an active GTP-bound and inactive GDP-bound state. Plasma membrane-associated small GTPase which cycles between an active GTP-bound and inactive GDP-bound state. In active state binds to a variety of effector proteins to regulate cellular responses, such as cell spreading and the formation of actin-based protrusions including lamellipodia and membrane ruffles. Promotes cell adhesion and spreading on fibrinogen in a CIB1 and alpha-IIb/beta3 integrin-mediated manner.

## Research Area

## Image Data



Western blot detection of RAC3 in K562,Rat Brain cell lysates using RAC3 antibody(1:1000 diluted).

## Note

For research use only.