

**Product Name: Pulmonary Surfactant Associated Protein D (13G17) Rabbit Monoclonal Antibody**  
**Catalog #: AMRe16689**

---

## Summary

<b>Production Name</b>	Pulmonary Surfactant Associated Protein D (13G17) Rabbit Monoclonal Antibody
<b>Description</b>	Rabbit Monoclonal Antibody
<b>Host</b>	Rabbit
<b>Application</b>	WB
<b>Reactivity</b>	Mouse,Rat

## Performance

<b>Conjugation</b>	Unconjugated
<b>Modification</b>	Unmodified
<b>Isotype</b>	IgG
<b>Clonality</b>	Monoclonal
<b>Form</b>	Liquid
<b>Storage</b>	Store at 4°C short term. Aliquot and store at -20°C long term. Avoid freeze/thaw cycles.
<b>Buffer</b>	Supplied in 50mM Tris-Glycine(pH 7.4), 0.15M NaCl, 40%Glycerol, 0.01% New type preservative N and 0.05% BSA.
<b>Purification</b>	Affinity purification

## Immunogen

<b>Gene Name</b>	Sftpd
<b>Alternative Names</b>	
<b>Gene ID</b>	20390.0
<b>SwissProt ID</b>	P50404.Recombinant protein of mouse Surfactant protein D

## Application

<b>Dilution Ratio</b>	WB: 1:1000
<b>Molecular Weight</b>	38kDa

## Background

---

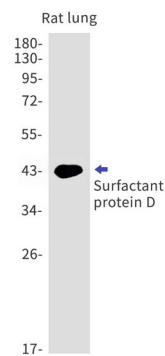
**Product Name: Pulmonary Surfactant Associated Protein  
D (13G17) Rabbit Monoclonal Antibody**  
**Catalog #: AMRe16689**

---



## Research Area

## Image Data



Western blot detection of Surfactant protein D in Rat lung cell lysates using Surfactant protein D antibody(1:1000 diluted).

## Note

For research use only.