

**Product Name: PSMC5 (17I3) Rabbit Monoclonal Antibody**  
**Catalog #: AMRe16613**

---

## Summary

<b>Production Name</b>	PSMC5 (17I3) Rabbit Monoclonal Antibody
<b>Description</b>	Rabbit Monoclonal Antibody
<b>Host</b>	Rabbit
<b>Application</b>	WB
<b>Reactivity</b>	Human,Mouse,Rat

## Performance

<b>Conjugation</b>	Unconjugated
<b>Modification</b>	Unmodified
<b>Isotype</b>	IgG
<b>Clonality</b>	Monoclonal
<b>Form</b>	Liquid
<b>Storage</b>	Store at 4°C short term. Aliquot and store at -20°C long term. Avoid freeze/thaw cycles.
<b>Buffer</b>	Supplied in 50mM Tris-Glycine(pH 7.4), 0.15M NaCl, 40%Glycerol, 0.01% New type preservative N and 0.05% BSA.
<b>Purification</b>	Affinity purification

## Immunogen

<b>Gene Name</b>	PSMC5
<b>Alternative Names</b>	Cim3; p45; p45/SUG; PSMC5; Rpt6; SUG1; TBP10; TRIP1;
<b>Gene ID</b>	5705.0
<b>SwissProt ID</b>	P62195.A synthetic peptide of human PSMC5

## Application

<b>Dilution Ratio</b>	WB: 1:2000-1:10000
<b>Molecular Weight</b>	46kDa

## Background

---

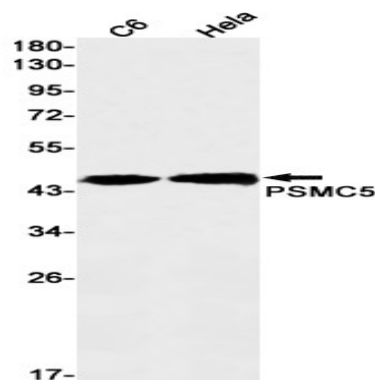
**Product Name: PSMC5 (1713) Rabbit Monoclonal Antibody**  
**Catalog #: AMRe16613**

---

The 26S protease is involved in the ATP-dependent degradation of ubiquitinated proteins. The regulatory (or ATPase) complex confers ATP dependency and substrate specificity to the 26S complex. Component of the 26S proteasome, a multiprotein complex involved in the ATP-dependent degradation of ubiquitinated proteins. This complex plays a key role in the maintenance of protein homeostasis by removing misfolded or damaged proteins, which could impair cellular functions, and by removing proteins whose functions are no longer required. Therefore, the proteasome participates in numerous cellular processes, including cell cycle progression, apoptosis, or DNA damage repair. PSMC5 belongs to the heterohexameric ring of AAA (ATPases associated with diverse cellular activities) proteins that unfolds ubiquitinated target proteins that are concurrently translocated into a proteolytic chamber and degraded into peptides.

## Research Area

## Image Data



Western blot detection of PSMC5 in C6, HeLa cell lysates using PSMC5 antibody (1:1000 diluted).

## Note

For research use only.