

Product Name: PSA/KLK3 (9M11) Rabbit Monoclonal Antibody
Catalog #: AMRe16576



Summary

Production Name	PSA/KLK3 (9M11) Rabbit Monoclonal Antibody
Description	Rabbit Monoclonal Antibody
Host	Rabbit
Application	WB,ELISA
Reactivity	Human

Performance

Conjugation	Unconjugated
Modification	Unmodified
Isotype	IgG
Clonality	Monoclonal
Form	Liquid
Storage	Store at 4°C short term. Aliquot and store at -20°C long term. Avoid freeze/thaw cycles.
Buffer	Rabbit IgG in phosphate buffered saline , pH 7.4, 150mM NaCl, 0.02% New type preservative N and 50% glycerol. Store at +4°C short term. Store at -20°C long term. Avoid freeze / thaw cycle.
Purification	Affinity purification

Immunogen

Gene Name	KLK3
Alternative Names	Prostate-specific antigen; PSA; Gamma-seminoprotein; Semin; Kallikrein-3; P-30 antigen; Semenogelase; KLK3; APS;
Gene ID	354.0
SwissProt ID	P07288.

Application

Dilution Ratio	WB 1:500-1:2000
Molecular Weight	29kDa

Product Name: PSA/KLK3 (9M11) Rabbit Monoclonal Antibody
Catalog #: AMRe16576

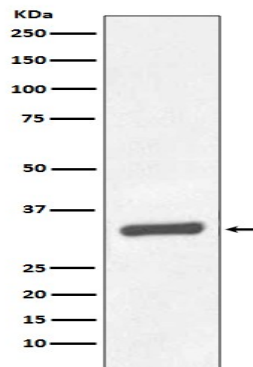


Background

PSA/KLK3 is a member of the glandular kallikrein subfamily of serine proteases. Upon cleavage of 7 amino-terminal amino acids, it is activated to liquefy semen in the seminal coagulum. Although PSA/KLK3 is produced in healthy individuals, investigators have found abnormally high levels in the blood of men with advanced prostate cancer. Hydrolyzes semenogelin-1 thus leading to the liquefaction of the seminal coagulum.

Research Area

Image Data



Western blot analysis of PSA/KLK3 expression in Human prostate carcinoma tissue lysate.

Note

For research use only.