

Product Name: PRPF8 (19L6) Rabbit Monoclonal Antibody
Catalog #: AMRe16552

Summary

Production Name	PRPF8 (19L6) Rabbit Monoclonal Antibody
Description	Rabbit Monoclonal Antibody
Host	Rabbit
Application	WB,ELISA
Reactivity	Human,Mouse,Rat

Performance

Conjugation	Unconjugated
Modification	Unmodified
Isotype	IgG
Clonality	Monoclonal
Form	Liquid
Storage	Store at 4°C short term. Aliquot and store at -20°C long term. Avoid freeze/thaw cycles.
Buffer	Rabbit IgG in phosphate buffered saline , pH 7.4, 150mM NaCl, 0.02% New type preservative N and 50% glycerol. Store at +4°C short term. Store at -20°C long term. Avoid freeze / thaw cycle.
Purification	Affinity purification

Immunogen

Gene Name	PRPF8
Alternative Names	HPRP8; p220; PRP8; PRPC8; Prpf8; RP13; SNRNP220;
Gene ID	10594.0
SwissProt ID	Q6P2Q9.

Application

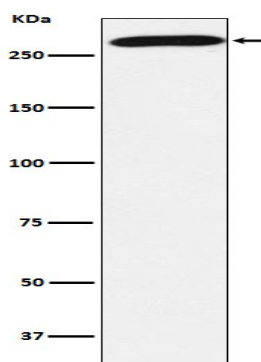
Dilution Ratio	WB 1:1000-1:5000
Molecular Weight	274kDa

Background

Central component of the spliceosome, which may play a role in aligning the pre-mRNA 5'- and 3'-exons for ligation. Interacts with U5 snRNA, and with pre-mRNA 5'-splice sites in B spliceosomes and 3'-splice sites in C spliceosomes. Plays role in pre-mRNA splicing as core component of precatalytic, catalytic and postcatalytic spliceosomal complexes, both of the predominant U2-type spliceosome and the minor U12-type spliceosome (PubMed: 10411133, PubMed: 11971955, PubMed: 28502770, PubMed: 28781166, PubMed: 28076346, PubMed: 29361316, PubMed: 30315277, PubMed: 29360106, PubMed: 29301961, PubMed: 30728453, PubMed: 30705154). Functions as a scaffold that mediates the ordered assembly of spliceosomal proteins and snRNAs. Required for the assembly of the U4/U6-U5 tri-snRNP complex, a building block of the spliceosome. Functions as scaffold that positions spliceosomal U2, U5 and U6 snRNAs at splice sites on pre-mRNA substrates, so that splicing can occur. Interacts with both the 5' and the 3' splice site.

Research Area

Image Data



Western blot analysis of PRPF8 expression in 293T cell lysate.

**Product Name: PRPF8 (19L6) Rabbit Monoclonal
Antibody**
Catalog #: AMRe16552



Note

For research use only.