

Product Name: POT1 (19U2) Rabbit Monoclonal Antibody
Catalog #: AMRe16379

Summary

Production Name	POT1 (19U2) Rabbit Monoclonal Antibody
Description	Rabbit Monoclonal Antibody
Host	Rabbit
Application	WB
Reactivity	Human

Performance

Conjugation	Unconjugated
Modification	Unmodified
Isotype	IgG
Clonality	Monoclonal
Form	Liquid
Storage	Store at 4°C short term. Aliquot and store at -20°C long term. Avoid freeze/thaw cycles.
Buffer	Supplied in 50mM Tris-Glycine(pH 7.4), 0.15M NaCl, 40%Glycerol, 0.01% New type preservative N and 0.05% BSA.
Purification	Affinity purification

Immunogen

Gene Name	POT1
Alternative Names	
Gene ID	25913.0
SwissProt ID	Q9NUX5.A synthetic peptide of human POT1

Application

Dilution Ratio	WB: 1:1000-1:5000
Molecular Weight	71kDa

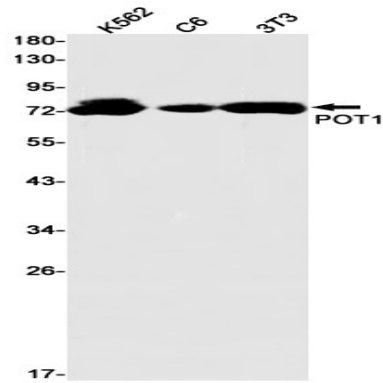
Background

Product Name: POT1 (19U2) Rabbit Monoclonal Antibody
Catalog #: AMRe16379



Research Area

Image Data



Western blot detection of POT1 in K562,C6,3T3 cell lysates using POT1 antibody(1:1000 diluted).

Note

For research use only.