

Product Name: POLR2C (4Z10) Rabbit Monoclonal Antibody
Catalog #: AMRe16355



Summary

Production Name	POLR2C (4Z10) Rabbit Monoclonal Antibody
Description	Rabbit Monoclonal Antibody
Host	Rabbit
Application	WB,ELISA
Reactivity	Human,Mouse,Rat

Performance

Conjugation	Unconjugated
Modification	Unmodified
Isotype	IgG
Clonality	Monoclonal
Form	Liquid
Storage	Store at 4°C short term. Aliquot and store at -20°C long term. Avoid freeze/thaw cycles.
Buffer	Rabbit IgG in phosphate buffered saline , pH 7.4, 150mM NaCl, 0.02% New type preservative N and 50% glycerol. Store at +4°C short term. Store at -20°C long term. Avoid freeze / thaw cycle.
Purification	Affinity purification

Immunogen

Gene Name	POLR2C
Alternative Names	hRPB33; hsRPB3; Polr2c; RPB3; RPB31; RPB33;
Gene ID	5432.0
SwissProt ID	P19387.

Application

Dilution Ratio	WB 1:1000-1:5000
Molecular Weight	31kDa

Product Name: POLR2C (4Z10) Rabbit Monoclonal Antibody
Catalog #: AMRe16355

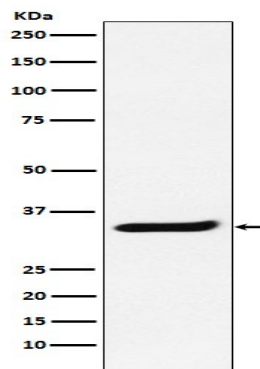


Background

DNA-dependent RNA polymerase catalyzes the transcription of DNA into RNA using the four ribonucleoside triphosphates as substrates. Component of RNA polymerase II which synthesizes mRNA precursors and many functional non-coding RNAs. DNA-dependent RNA polymerase catalyzes the transcription of DNA into RNA using the four ribonucleoside triphosphates as substrates. Component of RNA polymerase II which synthesizes mRNA precursors and many functional non-coding RNAs. Pol II is the central component of the basal RNA polymerase II transcription machinery. It is composed of mobile elements that move relative to each other. RPB3 is part of the core element with the central large cleft and the clamp element that moves to open and close the cleft (By similarity).

Research Area

Image Data



Western blot analysis of POLR2C expression in Jurkat cell lysate.

Note

For research use only.