

Product Name: PODXL (1315) Rabbit Monoclonal Antibody
Catalog #: AMRe16338

Summary

Production Name	PODXL (1315) Rabbit Monoclonal Antibody
Description	Rabbit Monoclonal Antibody
Host	Rabbit
Application	WB,ELISA
Reactivity	Human

Performance

Conjugation	Unconjugated
Modification	Unmodified
Isotype	IgG
Clonality	Monoclonal
Form	Liquid
Storage	Store at 4°C short term. Aliquot and store at -20°C long term. Avoid freeze/thaw cycles.
Buffer	Rabbit IgG in phosphate buffered saline , pH 7.4, 150mM NaCl, 0.02% New type preservative N and 50% glycerol. Store at +4°C short term. Store at -20°C long term. Avoid freeze / thaw cycle.
Purification	Affinity purification

Immunogen

Gene Name	PODXL
Alternative Names	Gp2; Gp200; PC; PCLP; PCLP1; Pcx; Podocalyxin; Podocalyxin like; Podocalyxin-like protein 1; Podxl;
Gene ID	5420.0
SwissProt ID	O00592.

Application

Dilution Ratio	WB 1:500-1:2000
Molecular Weight	59kDa

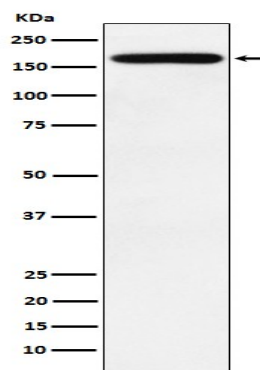
Product Name: PODXL (13I5) Rabbit Monoclonal Antibody
Catalog #: AMRe16338

Background

Involved in the regulation of both adhesion and cell morphology and cancer progression. Function as an anti-adhesive molecule that maintains an open filtration pathway between neighboring foot processes in the podocyte by charge repulsion. Involved in the regulation of both adhesion and cell morphology and cancer progression. Functions as an anti-adhesive molecule that maintains an open filtration pathway between neighboring foot processes in the podocyte by charge repulsion. Acts as a pro- adhesive molecule, enhancing the adherence of cells to immobilized ligands, increasing the rate of migration and cell-cell contacts in an integrin-dependent manner. Induces the formation of apical actin- dependent microvilli. Involved in the formation of a preapical plasma membrane subdomain to set up initial epithelial polarization and the apical lumen formation during renal tubulogenesis. Plays a role in cancer development and aggressiveness by inducing cell migration and invasion through its interaction with the actin-binding protein EZR. Affects EZR-dependent signaling events, leading to increased activities of the MAPK and PI3K pathways in cancer cells.

Research Area

Image Data



Western blot analysis of PODXL expression in HeLa cell lysate.

Note

For research use only.