

**Product Name: PMEL17 / GP100 (2Z15) Rabbit
Monoclonal Antibody
Catalog #: AMRe16301**

Summary

Production Name	PMEL17 / GP100 (2Z15) Rabbit Monoclonal Antibody
Description	Rabbit Monoclonal Antibody
Host	Rabbit
Application	WB,ELISA
Reactivity	Human

Performance

Conjugation	Unconjugated
Modification	Unmodified
Isotype	IgG
Clonality	Monoclonal
Form	Liquid
Storage	Store at 4°C short term. Aliquot and store at -20°C long term. Avoid freeze/thaw cycles.
Buffer	Rabbit IgG in phosphate buffered saline , pH 7.4, 150mM NaCl, 0.02% New type preservative N and 50% glycerol. Store at +4°C short term. Store at -20°C long term. Avoid freeze / thaw cycle.
Purification	Affinity purification

Immunogen

Gene Name	PMEL
Alternative Names	PMEL; ME20-M; Premelanosome protein; Silver locus protein homolog; PMEL17; SILV;
Gene ID	6490.0
SwissProt ID	P40967.

Application

Dilution Ratio	WB 1:500-1:2000
Molecular Weight	70kDa

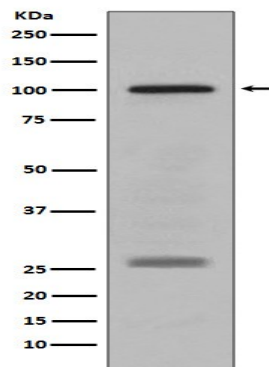
**Product Name: PMEL17 / GP100 (2Z15) Rabbit
Monoclonal Antibody
Catalog #: AMRe16301**

Background

Plays a central role in the biogenesis of melanosomes. Involved in the maturation of melanosomes from stage I to II. The transition from stage I melanosomes to stage II melanosomes involves an elongation of the vesicle, and the appearance within of distinct fibrillar structures. Release of the soluble form, ME20-S, could protect tumor cells from antibody mediated immunity. Plays a central role in the biogenesis of melanosomes. Involved in the maturation of melanosomes from stage I to II. The transition from stage I melanosomes to stage II melanosomes involves an elongation of the vesicle, and the appearance within of distinct fibrillar structures. Release of the soluble form, ME20-S, could protect tumor cells from antibody mediated immunity.

Research Area

Image Data



Western blot analysis of PMEL17 / GP100 expression in human melanoma lysate.

Note

For research use only.