

**Product Name: PHAPI2 / APRIL (8K19) Rabbit
Monoclonal Antibody
Catalog #: AMRe16054**

Summary

Production Name	PHAPI2 / APRIL (8K19) Rabbit Monoclonal Antibody
Description	Rabbit Monoclonal Antibody
Host	Rabbit
Application	WB
Reactivity	Human,Mouse,Rat

Performance

Conjugation	Unconjugated
Modification	Unmodified
Isotype	IgG
Clonality	Monoclonal
Form	Liquid
Storage	Store at 4°C short term. Aliquot and store at -20°C long term. Avoid freeze/thaw cycles.
Buffer	Supplied in 50mM Tris-Glycine(pH 7.4), 0.15M NaCl, 40%Glycerol, 0.01% New type preservative N and 0.05% BSA.
Purification	Affinity purification

Immunogen

Gene Name	ANP32B
Alternative Names	ANP32B; PAL31; PHAPI2; PHAPI2a; Ssp29;
Gene ID	10541.0
SwissProt ID	Q92688.A synthetic peptide of human PHAPI2

Application

Dilution Ratio	WB: 1:1000
Molecular Weight	29kDa

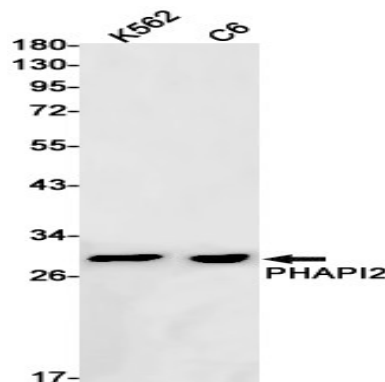
Background

**Product Name: PHAPI2 / APRIL (8K19) Rabbit
Monoclonal Antibody
Catalog #: AMRe16054**

Multifunctional protein working as a cell cycle progression factor as well as a cell survival factor. Required for the progression from the G1 to the S phase. Multifunctional protein that is involved in the regulation of many processes including cell proliferation, apoptosis, cell cycle progression or transcription (PubMed:[20015864](http://www.uniprot.org/citations/20015864), PubMed:[18039846](http://www.uniprot.org/citations/18039846)). Regulates the proliferation of neuronal stem cells, differentiation of leukemic cells and progression from G1 to S phase of the cell cycle. As negative regulator of caspase-3-dependent apoptosis, may act as an antagonist of ANP32A in regulating tissue homeostasis (PubMed:[20015864](http://www.uniprot.org/citations/20015864)). Exhibits histone chaperone properties, able to recruit histones to certain promoters, thus regulating the transcription of specific genes (PubMed:[20538007](http://www.uniprot.org/citations/20538007), PubMed:[18039846](http://www.uniprot.org/citations/18039846)). Plays also an essential role in the nucleocytoplasmic transport of specific mRNAs via the uncommon nuclear mRNA export receptor XPO1/CRM1 (PubMed:[17178712](http://www.uniprot.org/citations/17178712)). Participates in the regulation of adequate adaptive immune responses by acting on mRNA expression and cell proliferation (By similarity).

Research Area

Image Data



Western blot detection of PHAPI2 in K562,C6 cell lysates using PHAPI2 antibody(1:1000 diluted).

Note

For research use only.