

Product Name: PAX6 (19K6) Rabbit Monoclonal Antibody
Catalog #: AMRe15791

Summary

Production Name	PAX6 (19K6) Rabbit Monoclonal Antibody
Description	Rabbit Monoclonal Antibody
Host	Rabbit
Application	WB
Reactivity	Human,Mouse,Rat

Performance

Conjugation	Unconjugated
Modification	Unmodified
Isotype	IgG
Clonality	Monoclonal
Form	Liquid
Storage	Store at 4°C short term. Aliquot and store at -20°C long term. Avoid freeze/thaw cycles.
Buffer	Supplied in 50mM Tris-Glycine(pH 7.4), 0.15M NaCl, 40%Glycerol, 0.01% New type preservative N and 0.05% BSA.
Purification	Affinity purification

Immunogen

Gene Name	PAX6
Alternative Names	Paired box protein Pax-6; Aniridia type II protein; Oculorhombin; PAX6; AN2;
Gene ID	5080.0
SwissProt ID	P26367.A synthetic peptide of human PAX6

Application

Dilution Ratio	WB: 1:1000-1:5000
Molecular Weight	47kDa

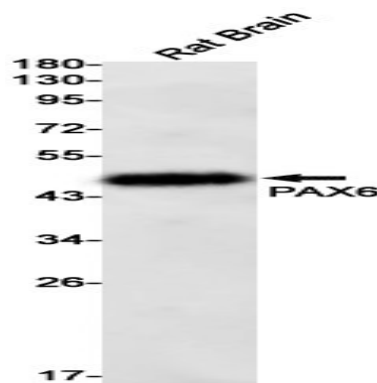
Background

Product Name: PAX6 (19K6) Rabbit Monoclonal Antibody
Catalog #: AMRe15791

Transcription factor with important functions in the development of the eye, nose, central nervous system and pancreas. Required for the differentiation of pancreatic islet alpha cells (By similarity). Competes with PAX4 in binding to a common element in the glucagon, insulin and somatostatin promoters. Regulates specification of the ventral neuron subtypes by establishing the correct progenitor domains (By similarity). Transcription factor with important functions in the development of the eye, nose, central nervous system and pancreas. Required for the differentiation of pancreatic islet alpha cells (By similarity). Competes with PAX4 in binding to a common element in the glucagon, insulin and somatostatin promoters. Regulates specification of the ventral neuron subtypes by establishing the correct progenitor domains (By similarity). Acts as a transcriptional repressor of NFATC1- mediated gene expression (By similarity).

Research Area

Image Data



Western blot detection of PAX6 in Rat Brain lysates using PAX6 antibody(1:1000 diluted).

Note

For research use only.