

**Product Name: p60 katanin (5E5) Rabbit Monoclonal Antibody**  
**Catalog #: AMRe15657**



## Summary

<b>Production Name</b>	p60 katanin (5E5) Rabbit Monoclonal Antibody
<b>Description</b>	Rabbit Monoclonal Antibody
<b>Host</b>	Rabbit
<b>Application</b>	WB
<b>Reactivity</b>	Human

## Performance

<b>Conjugation</b>	Unconjugated
<b>Modification</b>	Unmodified
<b>Isotype</b>	IgG
<b>Clonality</b>	Monoclonal
<b>Form</b>	Liquid
<b>Storage</b>	Store at 4°C short term. Aliquot and store at -20°C long term. Avoid freeze/thaw cycles.
<b>Buffer</b>	Supplied in 50mM Tris-Glycine(pH 7.4), 0.15M NaCl, 40%Glycerol, 0.01% New type preservative N and 0.05% BSA.
<b>Purification</b>	Affinity purification

## Immunogen

<b>Gene Name</b>	KATNA1 {ECO:0000255 HAMAP-Rule:MF_03023}
<b>Alternative Names</b>	Katanin p60 ATPase containing subunit A1; Katanin p60 subunit A1; KATNA1; p60 katanin;
<b>Gene ID</b>	11104.0
<b>SwissProt ID</b>	O75449.A synthetic peptide of human KATNA1

## Application

<b>Dilution Ratio</b>	WB: 1:1000
<b>Molecular Weight</b>	56kDa

**Product Name: p60 katanin (5E5) Rabbit Monoclonal Antibody**  
**Catalog #: AMRe15657**

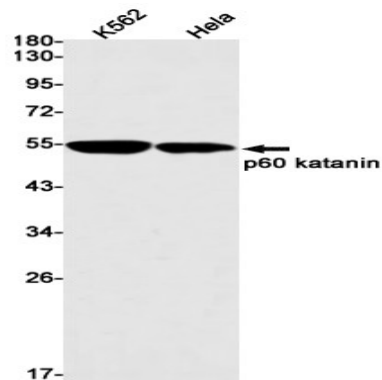


## Background

Severs microtubules in vitro in an ATP-dependent manner. This activity may promote rapid reorganization of cellular microtubule arrays, such as during disassembly of interphase microtubules at the G2-M transition. Catalytic subunit of a complex which severs microtubules in an ATP-dependent manner. Microtubule severing may promote rapid reorganization of cellular microtubule arrays and the release of microtubules from the centrosome following nucleation. Microtubule release from the mitotic spindle poles may allow depolymerization of the microtubule end proximal to the spindle pole, leading to poleward microtubule flux and poleward motion of chromosome. Microtubule release within the cell body of neurons may be required for their transport into neuronal processes by microtubule-dependent motor proteins. This transport is required for axonal growth.

## Research Area

## Image Data



Western blot detection of p60 katanin in K562, HeLa cell lysates using p60 katanin antibody (1:1000 diluted).

## Note

For research use only.