

**Product Name: P2Y6 (15H8) Rabbit Monoclonal Antibody**  
**Catalog #: AMRe15611**

---

## Summary

<b>Production Name</b>	P2Y6 (15H8) Rabbit Monoclonal Antibody
<b>Description</b>	Rabbit Monoclonal Antibody
<b>Host</b>	Rabbit
<b>Application</b>	WB
<b>Reactivity</b>	Human

## Performance

<b>Conjugation</b>	Unconjugated
<b>Modification</b>	Unmodified
<b>Isotype</b>	IgG
<b>Clonality</b>	Monoclonal
<b>Form</b>	Liquid
<b>Storage</b>	Store at 4°C short term. Aliquot and store at -20°C long term. Avoid freeze/thaw cycles.
<b>Buffer</b>	Supplied in 50mM Tris-Glycine(pH 7.4), 0.15M NaCl, 40%Glycerol, 0.01% New type preservative N and 0.05% BSA.
<b>Purification</b>	Affinity purification

## Immunogen

<b>Gene Name</b>	P2RY6
<b>Alternative Names</b>	P2ry6; P2Y6; P2Y6 receptor; PP2891;
<b>Gene ID</b>	5031.0
<b>SwissProt ID</b>	Q15077.A synthetic peptide of human P2Y6

## Application

<b>Dilution Ratio</b>	WB: 1:2000-1:10000
<b>Molecular Weight</b>	36kDa

## Background

---

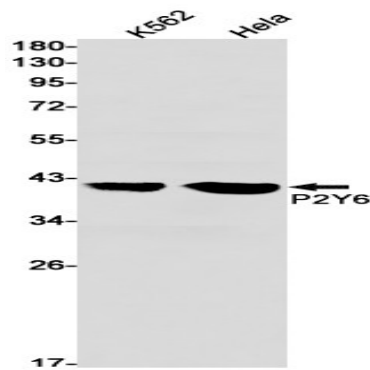
**Product Name: P2Y6 (15H8) Rabbit Monoclonal Antibody**  
**Catalog #: AMRe15611**

---

Receptor for extracellular UDP > UTP > ATP. The activity of this receptor is mediated by G proteins which activate a phosphatidylinositol-calcium second messenger system. Receptor for extracellular UDP > UTP > ATP. The activity of this receptor is mediated by G proteins which activate a phosphatidylinositol-calcium second messenger system.

## Research Area

## Image Data



Western blot detection of P2Y6 in K562, HeLa cell lysates using P2Y6 antibody (1:1000 diluted).

## Note

For research use only.