

Product Name: P Glycoprotein (6J13) Rabbit Monoclonal Antibody
Catalog #: AMRe15562

Summary

Production Name	P Glycoprotein (6J13) Rabbit Monoclonal Antibody
Description	Rabbit Monoclonal Antibody
Host	Rabbit
Application	WB
Reactivity	Human

Performance

Conjugation	Unconjugated
Modification	Unmodified
Isotype	IgG
Clonality	Monoclonal
Form	Liquid
Storage	Store at 4°C short term. Aliquot and store at -20°C long term. Avoid freeze/thaw cycles.
Buffer	Supplied in 50mM Tris-Glycine(pH 7.4), 0.15M NaCl, 40%Glycerol, 0.01% New type preservative N and 0.05% BSA.
Purification	Affinity purification

Immunogen

Gene Name	ABCB1
Alternative Names	CD243; MDR1; MDR3; Multidrug resistance protein 1; P-glycoprotein 1; PGY1;
Gene ID	5243.0
SwissProt ID	P08183.Recombinant protein of human P Glycoprotein

Application

Dilution Ratio	WB: 1:1000-1:2000
Molecular Weight	142kDa

Background

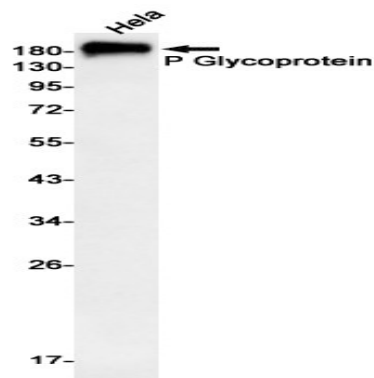
Product Name: P Glycoprotein (6J13) Rabbit Monoclonal Antibody
Catalog #: AMRe15562



A chronic, relapsing inflammation of the gastrointestinal tract with a complex etiology. It is subdivided into Crohn disease and ulcerative colitis phenotypes. Crohn disease may affect any part of the gastrointestinal tract from the mouth to the anus, but most frequently it involves the terminal ileum and colon. Translocates drugs and phospholipids across the membrane (PubMed:8898203, PubMed:2897240, PubMed:9038218). Catalyzes the flop of phospholipids from the cytoplasmic to the exoplasmic leaflet of the apical membrane. Participates mainly to the flop of phosphatidylcholine, phosphatidylethanolamine, beta-D-glucosylceramides and sphingomyelins (PubMed:8898203). Energy-dependent efflux pump responsible for decreased drug accumulation in multidrug-resistant cells (PubMed:2897240, PubMed:9038218).

Research Area

Image Data



Western blot detection of P Glycoprotein in HeLa cell lysates using P Glycoprotein antibody(1:1000 diluted).

Note

For research use only.