

## Summary

<b>Production Name</b>	Otx1 (9X3) Rabbit Monoclonal Antibody
<b>Description</b>	Rabbit Monoclonal Antibody
<b>Host</b>	Rabbit
<b>Application</b>	WB
<b>Reactivity</b>	Human,Mouse,Rat

## Performance

<b>Conjugation</b>	Unconjugated
<b>Modification</b>	Unmodified
<b>Isotype</b>	IgG
<b>Clonality</b>	Monoclonal
<b>Form</b>	Liquid
<b>Storage</b>	Store at 4°C short term. Aliquot and store at -20°C long term. Avoid freeze/thaw cycles.
<b>Buffer</b>	Supplied in 50mM Tris-Glycine(pH 7.4), 0.15M NaCl, 40%Glycerol, 0.01% New type preservative N and 0.05% BSA.
<b>Purification</b>	Affinity purification

## Immunogen

<b>Gene Name</b>	OTX1
<b>Alternative Names</b>	Homeobox protein OTX1; OTX1; Otx-1; Orthodenticle homolog 1;
<b>Gene ID</b>	5013.0
<b>SwissProt ID</b>	P32242.A synthetic peptide of human Otx1

## Application

<b>Dilution Ratio</b>	WB: 1:1000
<b>Molecular Weight</b>	37kDa

## Background

Probably plays a role in the development of the brain and the sense organs. Can bind to the BCD target sequence (BTS): 5'-

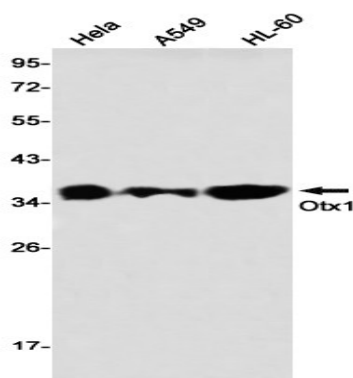
**Product Name: Otx1 (9X3) Rabbit Monoclonal Antibody**  
**Catalog #: AMRe15539**



TCTAATCCC-3'. Probably plays a role in the development of the brain and the sense organs. Can bind to the BCD target sequence (BTS): 5'-TCTAATCCC- 3'.

## Research Area

## Image Data



Western blot detection of Otx1 in HeLa,A549,HL-60 using Otx1 antibody(1:1000 diluted).

## Note

For research use only.