

**Product Name: Osteopontin (10W13) Rabbit Monoclonal Antibody**  
**Catalog #: AMRe15526**

---

## Summary

<b>Production Name</b>	Osteopontin (10W13) Rabbit Monoclonal Antibody
<b>Description</b>	Rabbit Monoclonal Antibody
<b>Host</b>	Rabbit
<b>Application</b>	WB,ELISA
<b>Reactivity</b>	Human,Mouse

## Performance

<b>Conjugation</b>	Unconjugated
<b>Modification</b>	Unmodified
<b>Isotype</b>	IgG
<b>Clonality</b>	Monoclonal
<b>Form</b>	Liquid
<b>Storage</b>	Store at 4°C short term. Aliquot and store at -20°C long term. Avoid freeze/thaw cycles.
<b>Buffer</b>	Rabbit IgG in phosphate buffered saline , pH 7.4, 150mM NaCl, 0.02% New type preservative N and 50% glycerol. Store at +4°C short term. Store at -20°C long term. Avoid freeze / thaw cycle.
<b>Purification</b>	Affinity purification

## Immunogen

<b>Gene Name</b>	SPP1
<b>Alternative Names</b>	BNSP; Bone sialoprotein 1; bone sialoprotein I; BSPI; early T-lymphocyte activation 1; ETA-1; Nephropontin; OPN; Osteopontin; OSTP; Secreted phosphoprotein 1;
<b>Gene ID</b>	6696.0
<b>SwissProt ID</b>	P10451.

## Application

<b>Dilution Ratio</b>	WB 1:500-1:2000
<b>Molecular Weight</b>	35kDa

**Product Name: Osteopontin (10W13) Rabbit Monoclonal Antibody**  
**Catalog #: AMRe15526**

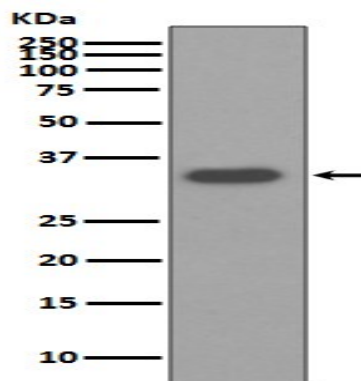
---

## Background

osteopontin Binds tightly to hydroxyapatite. Appears to form an integral part of the mineralized matrix. Probably important to cell-matrix interaction. Belongs to the osteopontin family. Ligand for integrin alpha-V/beta-3. 4 isoforms of the human protein are produced by alternative splicing. Major non-collagenous bone protein that binds tightly to hydroxyapatite. Appears to form an integral part of the mineralized matrix. Probably important to cell-matrix interaction.

## Research Area

## Image Data



Western blot analysis of Osteopontin expression in HepG2 cell lysate.

## Note

For research use only.