

**Product Name: NUP50 (13J18) Rabbit Monoclonal Antibody**  
**Catalog #: AMRe14981**

---

## Summary

<b>Production Name</b>	NUP50 (13J18) Rabbit Monoclonal Antibody
<b>Description</b>	Rabbit Monoclonal Antibody
<b>Host</b>	Rabbit
<b>Application</b>	WB
<b>Reactivity</b>	Human,Mouse,Rat

## Performance

<b>Conjugation</b>	Unconjugated
<b>Modification</b>	Unmodified
<b>Isotype</b>	IgG
<b>Clonality</b>	Monoclonal
<b>Form</b>	Liquid
<b>Storage</b>	Store at 4°C short term. Aliquot and store at -20°C long term. Avoid freeze/thaw cycles.
<b>Buffer</b>	Supplied in 50mM Tris-Glycine(pH 7.4), 0.15M NaCl, 40%Glycerol, 0.01% New type preservative N and 0.05% BSA.
<b>Purification</b>	Affinity purification

## Immunogen

<b>Gene Name</b>	NUP50
<b>Alternative Names</b>	NPAP60; NPAP60L; Nucleoporin 50kDa; Nup50;
<b>Gene ID</b>	10762.0
<b>SwissProt ID</b>	Q9UKX7.A synthetic peptide of human NUP50

## Application

<b>Dilution Ratio</b>	WB: 1:1000
<b>Molecular Weight</b>	50kDa

## Background

---

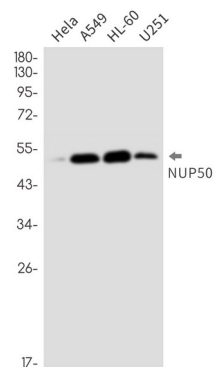
**Product Name: NUP50 (13J18) Rabbit Monoclonal Antibody**  
**Catalog #: AMRe14981**



Component of the nuclear pore complex that has a direct role in nuclear protein import. Actively displaces NLSs from importin-alpha, and facilitates disassembly of the importin-alpha:beta-cargo complex and importin recycling. Component of the nuclear pore complex that has a direct role in nuclear protein import (PubMed:<a href="http://www.uniprot.org/citations/20016008" target="\_blank">20016008</a>). Actively displaces NLSs from importin-alpha, and facilitates disassembly of the importin- alpha:beta-cargo complex and importin recycling (PubMed:<a href="http://www.uniprot.org/citations/20016008" target="\_blank">20016008</a>). Interacts with regulatory proteins of cell cycle progression including CDKN1B (By similarity). This interaction is required for correct intracellular transport and degradation of CDKN1B (By similarity).

## Research Area

## Image Data



Western blot detection of NUP50 in HeLa,A549,HL-60,U251 cell lysates using NUP50 antibody(1:1000 diluted).

## Note

For research use only.