

Summary

Production Name	NSE (9L10) Rabbit Monoclonal Antibody
Description	Rabbit Monoclonal Antibody
Host	Rabbit
Application	WB
Reactivity	Human,Mouse,Rat

Performance

Conjugation	Unconjugated
Modification	Unmodified
Isotype	IgG
Clonality	Monoclonal
Form	Liquid
Storage	Store at 4°C short term. Aliquot and store at -20°C long term. Avoid freeze/thaw cycles.
Buffer	Rabbit IgG in phosphate buffered saline , pH 7.4, 150mM NaCl, 0.02% New type preservative N and 50% glycerol. Store at +4°C short term. Store at -20°C long term. Avoid freeze / thaw cycle.
Purification	Affinity purification

Immunogen

Gene Name	ENO2 ENO2; ENOG; Enolase 2; enolase 2 (gamma, neuronal); Gamma-enolase; Neural
Alternative Names	enolase; neuron specific gamma enolase; Neuron-specific enolase; neurone-specific enolase; NSE;
Gene ID	2026.0
SwissProt ID	P09104.

Application

Dilution Ratio	WB 1:5000-1:10000
Molecular Weight	47kDa

Product Name: NSE (9L10) Rabbit Monoclonal Antibody
Catalog #: AMRe14909

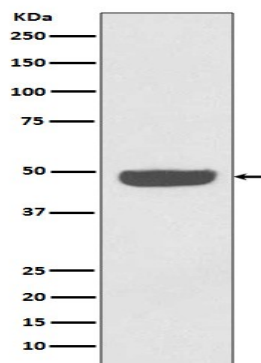


Background

ENO2 an enzyme with 2-phospho-D-glycerate hydro-lyase activity. One of the three enolase isoenzymes found in mammals. This isoenzyme, a homodimer, is found in mature neurons and cells of neuronal origin. A switch from alpha enolase to gamma enolase occurs in neural tissue during development in rats and primates. Has neurotrophic and neuroprotective properties on a broad spectrum of central nervous system (CNS) neurons. Binds, in a calcium- dependent manner, to cultured neocortical neurons and promotes cell survival (By similarity).

Research Area

Image Data



Western blot analysis of NSE expression in HeLa cell lysate.

Note

For research use only.