

Product Name: Nova1 (15E17) Rabbit Monoclonal Antibody
Catalog #: AMRe14810

Summary

Production Name	Nova1 (15E17) Rabbit Monoclonal Antibody
Description	Rabbit Monoclonal Antibody
Host	Rabbit
Application	WB
Reactivity	Human,Mouse,Rat

Performance

Conjugation	Unconjugated
Modification	Unmodified
Isotype	IgG
Clonality	Monoclonal
Form	Liquid
Storage	Store at 4°C short term. Aliquot and store at -20°C long term. Avoid freeze/thaw cycles.
Buffer	Supplied in 50mM Tris-Glycine(pH 7.4), 0.15M NaCl, 40%Glycerol, 0.01% New type preservative N and 0.05% BSA.
Purification	Affinity purification

Immunogen

Gene Name	NOVA1
Alternative Names	
Gene ID	4857.0
SwissProt ID	P51513.A synthetic peptide of human Nova1

Application

Dilution Ratio	WB: 1:1000-1:2000
Molecular Weight	52kDa

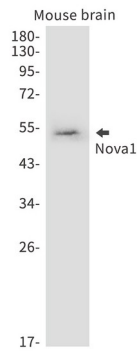
Background

Product Name: Nova1 (15E17) Rabbit Monoclonal Antibody
Catalog #: AMRe14810



Research Area

Image Data



Western blot detection of Nova1 in Rat lung cell lysates using Nova1 antibody.

Note

For research use only.