

**Product Name: NFAT1 (11H19) Rabbit Monoclonal Antibody**  
**Catalog #: AMRe14636**



## Summary

<b>Production Name</b>	NFAT1 (11H19) Rabbit Monoclonal Antibody
<b>Description</b>	Rabbit Monoclonal Antibody
<b>Host</b>	Rabbit
<b>Application</b>	WB,ELISA
<b>Reactivity</b>	Human

## Performance

<b>Conjugation</b>	Unconjugated
<b>Modification</b>	Unmodified
<b>Isotype</b>	IgG
<b>Clonality</b>	Monoclonal
<b>Form</b>	Liquid
<b>Storage</b>	Store at 4°C short term. Aliquot and store at -20°C long term. Avoid freeze/thaw cycles.
<b>Buffer</b>	Rabbit IgG in phosphate buffered saline , pH 7.4, 150mM NaCl, 0.02% New type preservative N and 50% glycerol. Store at +4°C short term. Store at -20°C long term. Avoid freeze / thaw cycle.
<b>Purification</b>	Affinity purification

## Immunogen

<b>Gene Name</b>	NFATC2
<b>Alternative Names</b>	cytoplasmic 2; NF ATP; NF-ATc2; NF-ATp; NFAT 1; NFAT1; NFAT1-D; NFATc2; NFATp;
<b>Gene ID</b>	4773.0
<b>SwissProt ID</b>	Q13469.

## Application

<b>Dilution Ratio</b>	WB 1:500-1:2000
<b>Molecular Weight</b>	100kDa

**Product Name: NFAT1 (11H19) Rabbit Monoclonal Antibody**  
**Catalog #: AMRe14636**



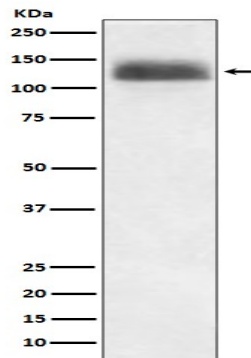
---

## Background

Plays a role in the inducible expression of cytokine genes in T-cells, especially in the induction of the IL-2, IL-3, IL-4, TNF-alpha or GM-CSF. Plays a role in the inducible expression of cytokine genes in T-cells, especially in the induction of the IL-2, IL-3, IL-4, TNF-alpha or GM-CSF. Promotes invasive migration through the activation of GPC6 expression and WNT5A signaling pathway.

## Research Area

## Image Data



Western blot analysis of NFAT1 expression in Ramos cell lysate.

## Note

For research use only.