

**Product Name: Nesprin3 (17X13) Rabbit Monoclonal Antibody**  
**Catalog #: AMRe14567**



## Summary

<b>Production Name</b>	Nesprin3 (17X13) Rabbit Monoclonal Antibody
<b>Description</b>	Rabbit Monoclonal Antibody
<b>Host</b>	Rabbit
<b>Application</b>	WB
<b>Reactivity</b>	Human

## Performance

<b>Conjugation</b>	Unconjugated
<b>Modification</b>	Unmodified
<b>Isotype</b>	IgG
<b>Clonality</b>	Monoclonal
<b>Form</b>	Liquid
<b>Storage</b>	Store at 4°C short term. Aliquot and store at -20°C long term. Avoid freeze/thaw cycles.
<b>Buffer</b>	Supplied in 50mM Tris-Glycine(pH 7.4), 0.15M NaCl, 40%Glycerol, 0.01% New type preservative N and 0.05% BSA.
<b>Purification</b>	Affinity purification

## Immunogen

<b>Gene Name</b>	SYNE3
<b>Alternative Names</b>	C14orf49; Nesp3; Nesprin 3; NET53; SYNE3;
<b>Gene ID</b>	161176.0
<b>SwissProt ID</b>	Q6ZMZ3.Recombinant protein of human Nesprin3

## Application

<b>Dilution Ratio</b>	WB: 1:1000-1:2000
<b>Molecular Weight</b>	112kDa

## Background

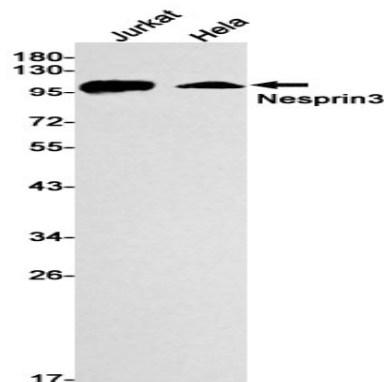
**Product Name: Nesprin3 (17X13) Rabbit Monoclonal Antibody**  
**Catalog #: AMRe14567**



Component of SUN-protein-containing multivariate complexes also called LINC complexes which link the nucleoskeleton and cytoskeleton by providing versatile outer nuclear membrane attachment sites for cytoskeletal filaments. As a component of the LINC (Linker of Nucleoskeleton and Cytoskeleton) complex involved in the connection between the nuclear lamina and the cytoskeleton. The nucleocytoplasmic interactions established by the LINC complex play an important role in the transmission of mechanical forces across the nuclear envelope and in nuclear movement and positioning. Probable anchoring protein which tethers the nucleus to the cytoskeleton by binding PLEC which can associate with the intermediate filament system. Plays a role in the regulation of aortic epithelial cell morphology, and is required for flow-induced centrosome polarization and directional migration in aortic endothelial cells.

## Research Area

## Image Data



Western blot detection of Nesprin3 in Jurkat, HeLa cell lysates using Nesprin3 antibody (1:1000 diluted).

## Note

For research use only.