

**Product Name: Napsin A (14C2) Rabbit Monoclonal Antibody**  
**Catalog #: AMRe14406**



## Summary

<b>Production Name</b>	Napsin A (14C2) Rabbit Monoclonal Antibody
<b>Description</b>	Rabbit Monoclonal Antibody
<b>Host</b>	Rabbit
<b>Application</b>	WB,ELISA
<b>Reactivity</b>	Human

## Performance

<b>Conjugation</b>	Unconjugated
<b>Modification</b>	Unmodified
<b>Isotype</b>	IgG
<b>Clonality</b>	Monoclonal
<b>Form</b>	Liquid
<b>Storage</b>	Store at 4°C short term. Aliquot and store at -20°C long term. Avoid freeze/thaw cycles.
<b>Buffer</b>	Rabbit IgG in phosphate buffered saline , pH 7.4, 150mM NaCl, 0.02% New type preservative N and 50% glycerol. Store at +4°C short term. Store at -20°C long term. Avoid freeze / thaw cycle.
<b>Purification</b>	Affinity purification

## Immunogen

<b>Gene Name</b>	NAPSA
<b>Alternative Names</b>	ASP4; KAP; Kdap; NAP1; NAPA; Napsa; Napsin-1; Napsin-A; Pronapsin A; SNAPA; TA01/TA02;
<b>Gene ID</b>	9476.0
<b>SwissProt ID</b>	O96009.

## Application

<b>Dilution Ratio</b>	WB 1:1000-1:5000
<b>Molecular Weight</b>	45kDa

**Product Name: Napsin A (14C2) Rabbit Monoclonal Antibody**  
**Catalog #: AMRe14406**

---

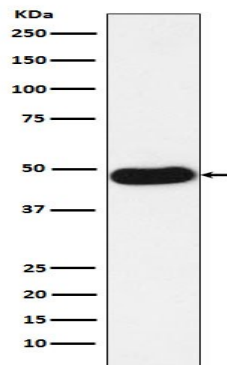


## Background

May be involved in processing of pneumocyte surfactant precursors. May be involved in processing of pneumocyte surfactant precursors.

## Research Area

## Image Data



Western blot analysis of NAPSIN A expression in Human lung adenocarcinoma lysate.

## Note

For research use only.