

Product Name: MUC1 (8S2) Rabbit Monoclonal Antibody
Catalog #: AMRe14225

Summary

Production Name	MUC1 (8S2) Rabbit Monoclonal Antibody
Description	Rabbit Monoclonal Antibody
Host	Rabbit
Application	WB
Reactivity	Human,Mouse,Rat

Performance

Conjugation	Unconjugated
Modification	Unmodified
Isotype	IgG
Clonality	Monoclonal
Form	Liquid
Storage	Store at 4°C short term. Aliquot and store at -20°C long term. Avoid freeze/thaw cycles.
Buffer	Supplied in 50mM Tris-Glycine(pH 7.4), 0.15M NaCl, 40%Glycerol, 0.01% New type preservative N and 0.05% BSA.
Purification	Affinity purification

Immunogen

Gene Name	MUC1 MUC1; CA15-3; CD227; DF3 antigen; Episialin; Epithelial membrane antigen; H23
Alternative Names	antigen; H23AG; Krebs von den Lungen-6; MAM6; MUC1/ZD; MUC-1/SEC; Mucin-1; Pem; KL-6; MUC-1/X; Tumor-associated mucin;
Gene ID	4582.0
SwissProt ID	P15941.A synthetic peptide of human MUC1

Application

Dilution Ratio	WB: 1:1000
Molecular Weight	122kDa

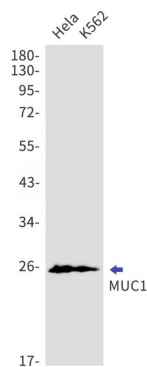
Product Name: MUC1 (8S2) Rabbit Monoclonal Antibody
Catalog #: AMRe14225

Background

This gene is a member of the mucin family and encodes a membrane bound, glycosylated phosphoprotein. This protein is anchored to the apical surface of many epithelia by a transmembrane domain, with the degree of glycosylation varying with cell type. The protein serves a protective function, binding to pathogens, as well as functioning in a cell signaling capacity. The alpha subunit has cell adhesive properties. Can act both as an adhesion and an anti-adhesion protein. May provide a protective layer on epithelial cells against bacterial and enzyme attack.

Research Area

Image Data



Western blot detection of MUC1 in HeLa,K562 cell lysates using MUC1 antibody(1:1000 diluted).

Note

For research use only.